



# echo

LARGE FORMAT PRINTER & ENLARGER

## USER GUIDE



**800.788.5572**

[GraphicProducts.com](http://GraphicProducts.com)

# Contents

|  |           |
|--|-----------|
| <b>Introduction .....</b>                                | <b>1</b>  |
| <b>Copyright .....</b>                                   | <b>2</b>  |
| <b>Warranty .....</b>                                    | <b>3</b>  |
| <b>Safety Warnings.....</b>                              | <b>5</b>  |
| <b>1. Getting to Know Echo .....</b>                     | <b>7</b>  |
| 1.1 Positioning .....                                    | 8         |
| 1.2 Parts and Terms.....                                 | 8         |
| <b>2. Setup Instructions.....</b>                        | <b>12</b> |
| 2.1 Normal Setup .....                                   | 12        |
| 2.2 Optional – Using an SD Memory Card.....              | 14        |
| 2.3 Optional – Preparing for PC Printing .....           | 14        |
| <b>3. Operating Instructions.....</b>                    | <b>16</b> |
| 3.1 Printing from a Scanned Document .....               | 16        |
| 3.2 Printing from the Poster Gallery.....                | 17        |
| 3.3 Printing from a PC.....                              | 18        |
| <b>4. Menu Options .....</b>                             | <b>20</b> |
| 4.1 Main Menu Options.....                               | 20        |
| 4.2 Advanced Options .....                               | 23        |
| 4.3 Setup Options.....                                   | 28        |
| <b>5. Echo Software .....</b>                            | <b>32</b> |
| 5.1 Echo's Driver and Printing Preferences.....          | 32        |
| 5.2 Echo Canvas .....                                    | 33        |
| 5.3 Word Plug-in for Echo .....                          | 33        |
| <b>6. Echo Poster Catcher .....</b>                      | <b>34</b> |
| 6.1 Installing the Poster Catcher.....                   | 34        |
| 6.2 Using the Poster Catcher.....                        | 34        |
| <b>7. Maintenance and Troubleshooting.....</b>           | <b>35</b> |
| 7.1 Cleaning Your Echo .....                             | 35        |
| 7.2 Troubleshooting.....                                 | 35        |
| <b>8. Glossary.....</b>                                  | <b>39</b> |
| <b>9. Certifications .....</b>                           | <b>41</b> |
| 9.1 FCC Compliance .....                                 | 41        |
| 9.2 US, Canadian and European EMC and EMI standards..... | 41        |
| 9.3 TUV Compliance .....                                 | 42        |
| 9.4 Printer Disposal/Recycling .....                     | 42        |

# Introduction

Congratulations! Now that you have your Echo large format printer and enlarger, you'll be creating posters in no time.

In addition to helping you set up and use Echo, this User Guide will serve as a reference document for maintaining the system, and for using its more advanced features.

If you need supplies, or have questions about Echo, give us a call at 800.788.5572 (or, internationally, at 1.503.644.5572) and we'll be happy to help.

## Copyright

This manual is copyrighted with all rights reserved. No portion may be copied or reproduced by any means without the prior consent of Graphic Products, Inc.

While every precaution has been taken in preparation of this document, Graphic Products, Inc. assumes no liability to any party for any loss or damage caused by errors or omissions or by statements resulting from negligence, accident or any other cause. Graphic Products, Inc. further assumes no liability for incidental or consequential damages arising from the use of this document. Graphic Products, Inc. disclaims all warranties of merchantability or fitness for a particular purpose.

Graphic Products, Inc. reserves the right to make changes without further notice to any product or system herein to improve reliability, function or design.

Reproduction of this material, in part or whole, is strictly prohibited without the written permission of Graphic Products, Inc.

## Warranty

Graphic Products' printers are warranted to be free from defects in materials or workmanship for a period of two years from the date of purchase. Within this period, Graphic Products, Inc. will, at its sole option, repair or replace any components which fail in normal use. Such repairs or replacement will be made at no charge to the purchaser for parts or labor, provided that the purchaser shall be responsible for any transportation cost. This warranty does not cover loss, damages from accident, equipment or parts which have been misused, altered, neglected, carelessly handled, or used for purposes other than those for which the printer was manufactured, or damages resulting from unauthorized service.

Repairs have a 90 day warranty, or will be covered under the original warranty duration, whichever is longer.

The warranties and remedies contained herein are exclusive and in lieu of all other warranties whether express, implied, or statutory, including any liability arising under any warranty of merchantability or fitness for a particular purpose, statutory or otherwise.

This warranty gives the purchaser specific legal rights, which may vary from state to state. In no event shall Graphic Products be liable for any incidental, special, indirect, or consequential damages, whether resulting from the use, misuse, or inability to use the product for any reason including defect. Some states do not allow the exclusion of incidental or consequential damages, so the above limitation may not apply in all areas.

Graphic Products retains the exclusive right within all warranty periods to repair, replace the product or offer a full refund of the purchase price at its sole discretion. Such remedy shall be the purchaser's sole and exclusive remedy for any breach of warranty.

General maintenance and cleaning of the printer is the purchaser's responsibility and is not covered by the warranty. Expendable items or parts such as paper supplies are not covered by this warranty.

---

**NOTE:** Some printers require specific preparation before shipping. Please contact your Graphic Products representatives to ensure correct return procedure: call 800.788.5572 or visit [GraphicProducts.com](http://GraphicProducts.com). Graphic Products, Inc. shall not be responsible for any loss or damages incurred during shipping.

---

To prevent damage to Echo and to avoid nullifying the Echo warranty, please follow these rules:

- Only use official Graphic Products paper supplies in Echo.
- Read all instructions and rules in this manual completely.

If something seems to be wrong with Echo, refer to section 7, *Maintenance and Troubleshooting*. If your problem is not resolved by following the recommended steps, please contact Graphic Products for assistance.

# Safety Warnings

Please review the following safety instructions before using Echo.

- Echo is intended for indoor use only. Keep the printer away from humidity and prolonged exposure to direct sunlight.
- Echo is designed for use at normal room temperatures of 50-105°F (10-40°C), and at a maximum altitude of approximately 6500 feet (2000 meters) above sea level.
- Check the power source voltage before connecting the printer to a power outlet. Echo is designed for use with standard, grounded 110-240 VAC, 50-60 Hz power outlets. Typical current consumption for Echo is 2.2 A.
- Only use the approved power cord with Echo. If a replacement cord is needed, please contact Graphic Products for support at 800.788.5572.
- Before plugging the power cord into Echo, make sure the On/Off switch is set to Off.
- Do not allow liquids or metals to contact any of Echo's internal parts. For ordinary cleaning, follow the instructions included in this guide.
- Only qualified service personnel should attempt to perform maintenance on the printer.
- The printer must be turned off before any type of maintenance work is done.
- Echo may build a small static charge in static-sensitive environments. Do not operate Echo near flammable materials.
- The power outlet should be near the printer and easily accessible for quick power disconnection. Unplug the printer from the wall socket to completely disconnect power.
- Power off and unplug Echo if:
  - Echo makes an unusual noise.
  - Liquids or metals are inserted into the system.
  - There is an electrical storm or power failure.
  - There is smoke or an unusual smell coming from Echo.

---

**NOTE:** Changes or modifications not expressly approved by the party responsible for compliance could void the user's authority to operate the equipment.

---



---

**WARNING:** Do not place your fingers near the cutting blades. If you must clear a paper jam, turn the printer off first, and use a tool, such as a pencil, to remove the jammed paper. Do not use your fingers.

---

The cutting blade is located on the inside of the printing unit. The cutting blade is sharp and may cycle automatically after a poster is printed. If Echo is powered off while the cutter is moving, it may stop before returning to its home position on the far right. Do not move the cutter by hand; instead, turn the system on and allow the blade to move automatically. Do not attempt to load supply paper when the cutter is not in its home position.

Under normal operating conditions, the blade poses no harm to a user. Echo's cutter mechanism is equipped with an over-torque circuit that is meant to shut off the cutter if too much resistance is sensed; however, the blade still has the potential to cause injury if misused.

We recommend the use of the surge suppressor that is provided with Echo. It will help protect Echo from possible damage during nearby lighting storms. It should be installed between the AC wall outlet and the AC input to the device.



# 1. Getting to Know Echo

Echo is a Thermal Printer, meaning that it uses heat to activate ink that is included in its special supply paper. You will never need to change an ink cartridge in this system! Echo is a versatile device, and allows you to print large posters from several different sources:

- Enlarge an existing document or picture, using the built-in scanner.
- Print from Echo's Gallery of saved posters.
- Print from a computer, either using a USB cord or across a network.

Echo is larger than most desktop printers, and weighs about 57 pounds (about 25 kg). We recommend that you have two people work together to unpack and position the system, one person at each end.

In Echo's box, you will find the following materials:



- 1 Echo Large Format Printer & Enlarger**
- 2 User Documentation**
- 3 Software Installation CD**
- 4 Electrical Power Cord**
- 5 Surge Suppressor**
- 6 USB Cable**
- 7 Document Carrier Sheet**

If any of these materials are not included, please contact Graphic Products at 800.788.5572.

Set aside the box and packaging material for future use. You may need the box and packing material later, when moving or shipping Echo.

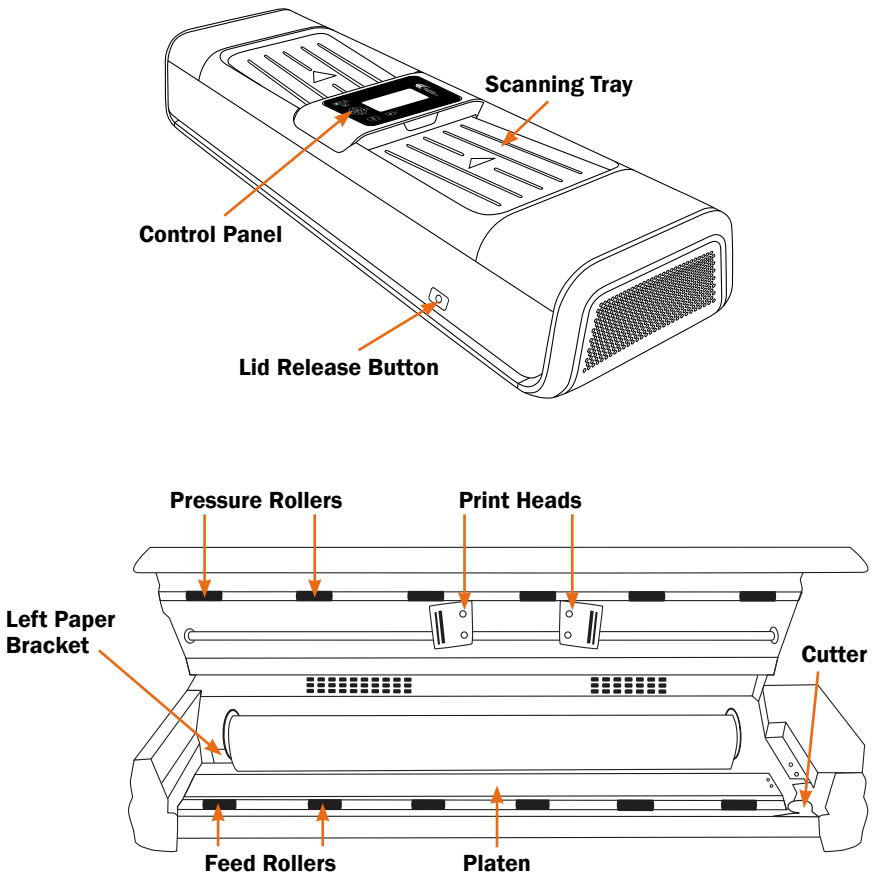
## 1.1 Positioning

There are a few things to keep in mind when deciding where to use Echo:

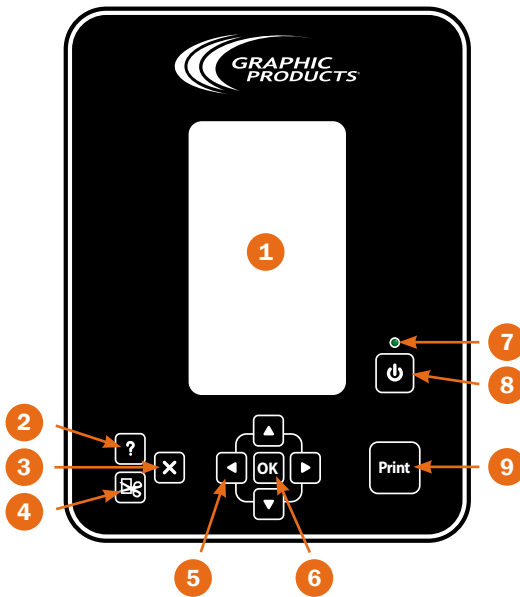
- Echo is a large device. Place it on a flat, level surface that can safely support its weight. Have one person lifting at each end when you need to move Echo.
- Leave an open space of about 2" (5 cm) behind Echo, so that you can fully open the lid to load supply paper, and so that the power and computer connection cables do not bind or kink.
- Do not cover or block the air vents on the ends of Echo; they provide necessary ventilation for the internal components. A space of at least 2" (5 cm) is recommended here as well.

## 1.2 Parts and Terms

Echo is designed for ease of use. There are only a few basic parts for you to know about. These parts are labeled here.



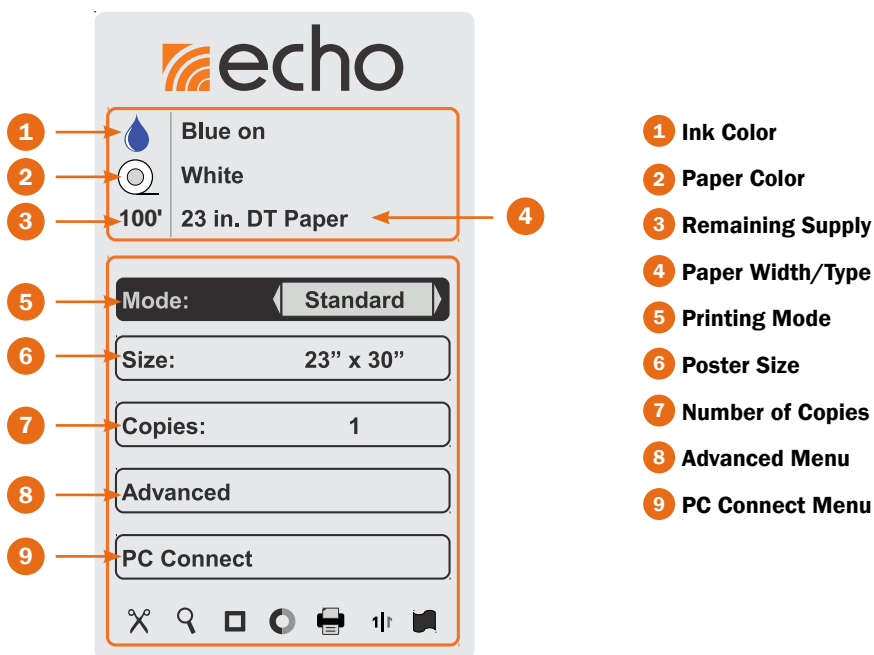
## Control Panel



Echo's Control Panel gives you easy access to all of Echo's controls and settings. Individual buttons and functions are labeled below. Detailed descriptions of the different menu options appear in section 8.1, *Main Menu Options*.

- 1 Control Screen** – Displays menu options.
- 2 Help** – Open Echo's on-screen Help menu.
- 3 Close** – Close the current menu, cancel the current set of prints, or go back a step when browsing folders.
- 4 Cut** – Operate the motorized paper cutter.
- 5 Navigation Arrows** – Four arrows (up, down, right, left) used to navigate through the menus in the Control Screen.
- 6 OK Button** – Press OK to activate or select a menu option.
- 7 Power Indicator LED** – Glows green when Echo is ready to print.
- 8 Power On/Off Button** – Turn Echo's scanner and LCD display on or off. Note that this is different from the Master Power Switch, which is located on the Connection Panel on the rear of the printer. The Master Power Switch can be left on.
- 9 Print** – Scan an original document from the scanning tray and print it as an enlarged poster.

## Control Screen



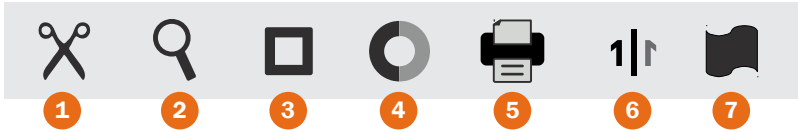
The screen shows details about the current paper supplies, and displays the various options that are available. This main menu appears when you turn on the system.

To navigate the options shown on the screen, use the Navigation Arrow buttons, then use the OK button to select. Use the Up and Down arrow buttons to highlight different options, and use the Right and Left arrow buttons to choose different settings for the highlighted option.

In certain menus, you may see arrows at the top and bottom edges of the menu. This indicates that the menu continues to another page; use the Up and Down arrow buttons to cycle through options and continue to the next page. Pressing the Close button will return you to the previous menu.

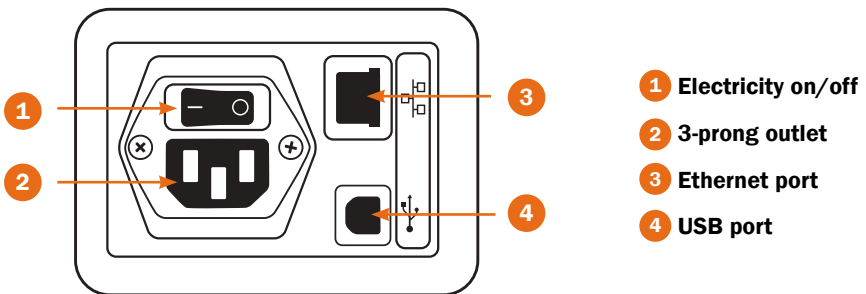
The following Indicator Icons, along the bottom of the screen, will only appear when the represented option is enabled. Some of them will usually appear, as those functions are on by default.

## Indicator Icons



- 1 Auto Cut** – Each poster will be cut immediately after being printed. This option is enabled by default.
- 2 Preview** – A preview of your poster will appear on the screen before it is printed. You will need to press OK or Print again to begin printing. This option is enabled by default.
- 3 Border** – A printed Border is being added to your poster.
- 4 Contrast** – The default Contrast has been adjusted for this print.
- 5 Alignment/Darkness** – The default Alignments or Darkness have been adjusted for this print.
- 6 Mirror** – This print will be reversed, as if seen in a mirror.
- 7 Banner** – A series of original documents, or a single long document, are being printed as a single long banner (rather than as a series of individual posters.)

## Connection Panel



- 1 Electricity on/off**
- 2 3-prong outlet**
- 3 Ethernet port**
- 4 USB port**

## 2. Setup Instructions

### 2.1 Normal Setup

To begin using Echo, you will need to follow several basic steps. There are also some optional steps, which will prepare your Echo for more advanced uses.

#### Power

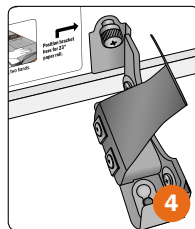
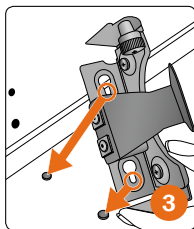
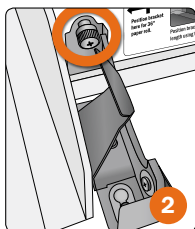
Echo needs power from a standard, grounded 110-240V wall socket. Before connecting the power cord, make sure that the Master Power Switch is set to the “Off” position. (The Master Power Switch is located on the Connection Panel, on the back of the system.) Connect the surge suppressor to a wall socket. Then, connect Echo’s power cable to the surge suppressor and to Echo’s power plug, next to the Master Power Switch. You can then turn the Master Power Switch on.

#### Moving the Left Paper Bracket

Echo can use supply paper rolls in two different sizes: 23" and 36". (The 23" width is actually just over 23" wide; for simplicity, it is referred to as 23".)

When changing from one supply paper size to the other, you will need to move the left paper bracket to the appropriate position inside the system.

1. Press the Lid Release button on Echo’s front panel, and raise the printer lid. With the printer lid open, you can check the label inside the system to see if the bracket is in the correct position for your paper.
2. The left paper bracket has an attached thumbscrew to secure it in place. If you need to move the bracket, release the thumbscrew by turning it counter-clockwise.
3. Pull the bracket toward the front of the printer, “unlocking” the bracket from its alignment pins, and then lift it out. Be careful, as the edges of this bracket may be sharp.
4. Position the left paper bracket over the appropriate set of alignment pins, and push the bracket toward the back of the printer. The alignment pins and bracket will “lock” together.



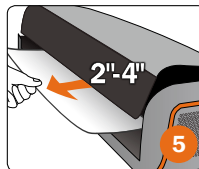
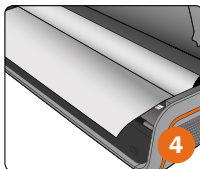
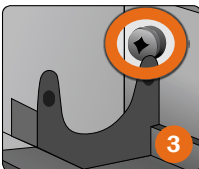
5. Secure the bracket with the thumbscrew, turning the screw clockwise until snug.

## Loading Supply Paper

Echo uses special supply paper to print posters. You will need to load this paper properly before beginning to use the system. You will also need to load a new supply roll when the old one runs out, or when you want to change paper colors or types.

When you load supply paper, the cutter should be in its home position, at the far right of the printer. If the cutter is not at the home position, do not move it by hand. Instead, close the lid, and use the Power On/Off button to turn Echo on, prompting the cutter to return home. Then, turn the system off again and continue.

1. Turn Echo off with the Power On/Off button. Press the Lid Release button on the front of the system, and raise the lid.
2. If you are replacing an existing roll of supply paper, lift the existing roll out of its place.
3. Make sure that the left paper bracket is in the correct position for the paper you will be using. (For details on moving the bracket, see *Moving the Left Paper Bracket* in this section.)
4. Place your new roll of supply paper in the printer, with the end caps resting in the paper brackets, and with the paper unrolling from beneath the roll, as shown.
5. Pull the edge of the paper a few inches out of the printer, so that you can keep the paper in place when you close the lid. Hold the edge of the paper with one hand as you gently lower the lid, to keep the paper from curling back in. Then, use both hands to press the lid fully closed.
6. Turn Echo back on with the Power On/Off button. At this point, Echo will be ready to print. If preferred, you may use Echo's cutter to trim the edge of the paper with the Cut (scissors) button.

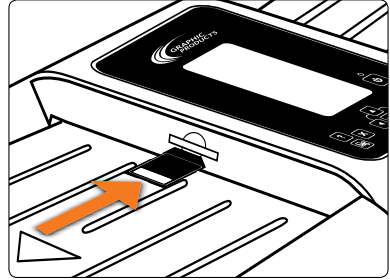


## 2.2 Optional – Using an SD Memory Card

In order to save your scanned posters for later reprinting, use a removable SD Memory Card (not included). When no SD card is present, the functions that would require it will be unavailable.

In order to use a memory card, insert the card in the slot at the left-hand side of the Control Panel, as shown below. It is best to insert or remove a memory card while Echo is turned off.

Echo will accept most common SD cards; classes 4, 6, and 10, in sizes up to 32GB, have been tested. A typical 23" × 30" poster will occupy about 6MB of storage space, while a typical 36" × 46" poster will occupy about 16MB. For comparison, a common, inexpensive SD card (2GB capacity) will hold over 300 posters of the smaller size, or over 100 of the larger size.



## 2.3 Optional – Preparing for PC Printing

Echo can be connected to computers, just like other desktop printers. This allows Echo to print posters directly from designs created on those computers.

### Physical Connections

If you will use Echo with a single computer, you will probably use a USB connection. Plug the USB cord into both Echo and your computer.

Echo can also be connected to a network, so that multiple computers can print remotely. If you would like to use this type of connection, plug an Ethernet cord (not included) into Echo from your network.

### Software Installation

Once Echo is connected to your computer or to your network, install the driver software onto your computer using the CD provided. You may need help from your IT team, as these installations typically require Administrative permissions. If there are any questions, please contact our support team at 800.788.5572.



**CONNECTING A USB CORD TO ECHO**



**CONNECTING AN ETHERNET CORD TO ECHO**



## Network Settings

To use Echo with a network connection, you will need to set Echo's network settings appropriately for your network. Settings vary, so check with your IT team to make sure that you have the right details. Once these settings have been entered, they will be saved for later use.

1. Use the Up and Down arrow buttons to highlight the Advanced option on the main menu, and press the OK button.
2. In the Advanced menu, highlight the Setup option, and press the OK button.
3. Highlight Network, and press the OK button.
4. Highlight IP Type, and use the Left and Right arrow buttons to select either Static or DHCP. We recommend Static IP for most networks, which will require you to set the other network details (Address, Gateway, and Mask) in the next step. The DHCP setting has Echo attempt to find these details automatically when you place Echo in its LAN Connected mode.
5. If you are using the Static option, continue to the other network details: highlight Address and press the OK button. Then, use the Up and Down arrows to adjust the value of the highlighted digit, and use the Left and Right arrows to change which digit is highlighted. Press the Close ("X") button when finished with the Address setting, and continue to Gateway and Mask until all the appropriate details have been entered.

If your network changes, you may need to update these settings as well. You can find more details in section 4, *Menu Options*.

## 3. Operating Instructions

Echo can be used several different ways:

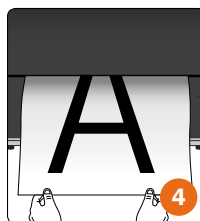
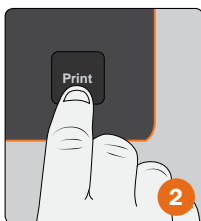
- Use Echo as a standalone document enlarger. Place a letter-size original document into the scan input tray at the top of the machine, and Echo can print a poster-size version of that document or picture. This is the fastest and easiest approach. You can also customize posters made this way using Echo's Advanced options, such as adding a printed border.
- Print popular posters, such as geographic maps, the periodic table of elements, etc., from Echo's PreMade Poster Gallery.
- Scan a letter-size original document, and save it as a poster design in Echo's User Gallery for later printing.
- Print designs directly from a computer, designing your poster in Echo Canvas or another program. You can connect your computer to Echo with a USB cord or over a local network.

### 3.1 Printing from a Scanned Document

It's incredibly easy to scan a letter-size page (a flyer, memo, picture, chart, etc.) and enlarge it to a poster size. For smaller documents, use the included carrier sheet to allow your document to feed through Echo's scanner properly.

Once you understand the basic procedure, you can explore the Advanced options for more customized prints. Before you begin, make sure that Echo is powered on and has supply paper loaded.

1. Place a letter-size picture or document face up in the scanning tray, feeding the leading edge into the scanner. There is a mark on the scanning tray to show how far your document should be fed.
2. Press the Print button on the Control Panel. Your original document will be scanned and a preview will appear on the screen.
3. Press the Print button again to print the poster, or press the Close ("X") button to cancel.
4. Echo will print your poster and (by default) automatically cut it from the roll of paper. Your finished poster is ready for display!



While this process uses the default settings for the printer, there is a wide variety of options available to help customize your poster. These options will be discussed in section 4, *Menu Options*.

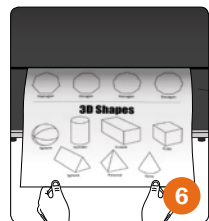
## 3.2 Printing from the Poster Gallery

Echo can store and print saved posters, either from pre-made designs that are already included in your Echo's PreMade Gallery or from documents that you have scanned and saved into the User Gallery. The User Gallery is stored on an optional SD Memory Card; without a memory card, you will be able to print posters from the PreMade Gallery, but you will not be able to save your own scanned documents into the Gallery for later printing.

### Printing from the Gallery

Before you begin, make sure that Echo is powered on and has supply paper loaded.

1. Use the Up and Down arrow buttons to highlight the Advanced option on the main menu, and press the OK button.
2. In the same way, scroll through the Advanced menu to highlight Gallery, and press the OK button.
3. Highlight either the PreMade Gallery (for designs from Graphic Products) or the User Gallery (for designs that you have scanned and saved.) Then, press the OK button.
4. Browse through the posters in your selected gallery using the arrow buttons. When you find the poster you want to print, highlight it and press the OK button.
5. Use the arrow buttons to set the desired size or number of copies, and choose if you would like to Inverse the print. When ready, press the Print button to begin printing.
6. Echo will print your poster and (by default) automatically cut it from the roll of paper. Your finished poster is ready for display!



## Scan and Save

To scan a poster design and save it for later, make sure that Echo is powered on and has an SD Memory Card inserted.

1. Use the Up or Down arrows to highlight the Advanced option on the main menu, and press the OK button. Then, scroll through the Advanced menu to highlight Save Scan, and press the OK button.
2. Use the arrow buttons to select the printing mode and poster size you want to use for this poster.
3. Place your document in the scanner and press the Print button. The document will be scanned and saved on your SD memory card.
4. When the save is complete, the file name assigned to your newly-scanned poster will be shown. Press the OK button to finish the process. The design will appear in your User Gallery for later printing!



## 3.3 Printing from a PC

Echo can print posters directly from your computer. To print in this way, Echo will need to be in Connection mode, waiting for instructions from a computer. While in Connection mode, Echo will only accept commands from the USB or network connection, as specified. When Echo is not in Connection mode, it will not receive commands from any connected computer. You can enable or disable these connections from Echo's Control Panel.

Before you begin, make sure that Echo is powered on and has supply paper loaded. You will also need to have Echo connected to your computer with a USB cord, or connected to your network with an Ethernet cord. Your computer will also need the Echo driver software installed. (These steps are described in section 3, *Setup Instructions*.)

1. On the main menu, highlight "PC Connect" and press the OK button.
2. To use a direct connection to one computer, highlight "USB", and press the OK button. Echo will display the message, "Connection: USB." To use a network connection instead, highlight "LAN", and press the OK button. Echo will display the message, "Connection: LAN."

3. On your computer, open the design that you would like to print, and select the Print function. (This process may vary slightly, depending on your design program.)
4. Make sure that Echo is your selected printer, and that it is set for the correct poster size and orientation. Then, click Print or OK, just like you would if you were using a typical desktop printer. Your finished poster will soon be ready for display!



Echo will remain in Connection mode, ready to print more designs from your computer, until you press the Close ("X") button. If the Auto-Off option has been enabled and Echo does not receive any print jobs for the designated idle time, Echo may shut down on its own. To resume printing, simply turn Echo back on with the Power On/Off button.

## 4. Menu Options

Many of Echo's functions and features can be customized using these menus. Remember to make any desired changes here before printing your poster.

### 4.1 Main Menu Options

The three most common options are available right from Echo's main menu. These options are Mode, Size, and Copies.

#### Mode

Echo can print in four different modes: Standard, Photo Fast, Photo Best, and Inverse.

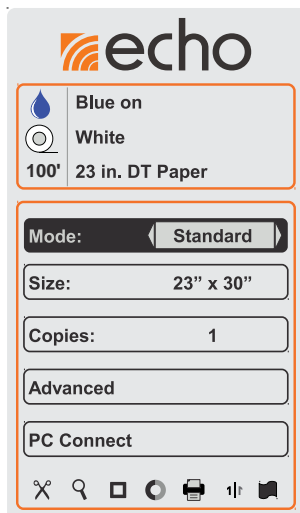
- **Standard:** Best for printing text and line drawings in high contrast, with no shades of gray or variations of color.
- **Photo Fast:** Quickly reproduces photos and art, but does not provide as high a final print quality as "Photo Best".
- **Photo Best:** Reproduces photos and art with the highest print quality, but takes about twice the time to print in comparison to "Photo Fast".
- **Inverse:** Creates a "negative" image, reversing light and dark areas. An original page with black text on a white background might be printed as white text on a black background. (Actual printed colors will be determined by the supply paper that is currently loaded.) Inverse printing gives a print quality similar to Standard printing. When using Inverse printing mode, the "Cut Line" poster sizes are not available.

To change Echo's current printing mode, follow these steps.

1. Use the Up and Down arrows on Echo's Control Panel to highlight the Mode option on the Main Menu. As this is the menu's first option, it may already be highlighted.
2. Use the Right and Left arrows to select the desired Mode.

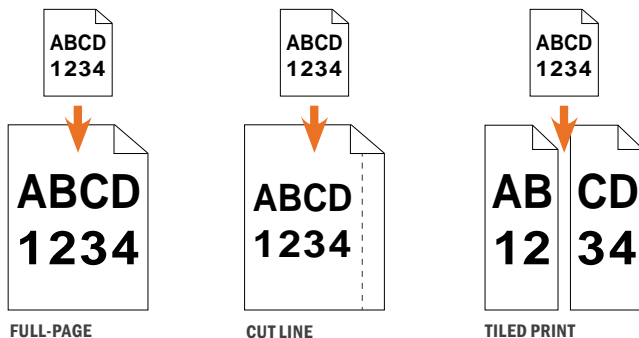
#### Size

This option allows you to choose from a number of print sizes. The available size settings depend on the size of the supply paper (23" or 36") that is currently loaded in Echo. When 23" paper is loaded, the default poster size will be 23" × 30"; with 36" paper, the default poster size will be 36" × 46".



Echo determines the size of printed posters in three different ways: Full-Page, Cut Lines, and Tiled Prints. These options are available for both the 23" and 36" supply paper sizes.

- **Full-Page:** The printed image is formatted for the width of the supply paper (23" or 36"), with a selection of different lengths. Because the printed poster fits exactly on the supply paper, a poster made in this way is ready to display immediately. Full-Page is the most common sizing method.
- **Cut Line:** Noted with the letter "C", the Cut Line sizes create posters that do not fill the entire width of the supply paper. Instead, there will be a blank space along one side. Echo will print a dotted line at that point. You can then cut along that line with scissors, a craft knife, or a paper cutter, removing the extra material. When using Inverse printing mode, the "Cut Line" poster sizes are not available.
- **Tiled Print:** Noted with the letter "T", the Tiled Print sizes create posters that are larger than your supply paper. To do this, Echo will print two separate parts to your large poster, which can be overlapped by about an inch and taped or mounted together. The result is a poster that measures nearly twice the width of your supply paper. When creating a Tiled poster, Echo will include a dotted line at the margin of the poster to help line up the parts of the complete poster; cut along this dotted line to remove any gaps in the print.



To change the size for your next poster printing, follow these steps.

1. Use the Down arrow to highlight the Size option on the main menu.
2. Use the Left and Right arrows to select the desired poster size.

The available print sizes are listed here.

### 23" Supply Paper

|                           |              |
|---------------------------|--------------|
| 23" × 30" (58 × 76 cm)    | Full-Page    |
| 23" × 18" (58 × 46 cm)    | Full-Page    |
| C17" × 22" (43 × 56 cm)   | Cut Line     |
| C20" × 26" (51 × 66 cm)   | Cut Line     |
| T45" × 58" (114 × 147 cm) | Tiled Poster |

### 36" Supply Paper

|                           |              |
|---------------------------|--------------|
| 36" × 46" (91 × 117 cm)   | Full-Page    |
| 36" × 28" (91 × 71 cm)    | Full-Page    |
| C30" × 38" (76 × 97 cm)   | Cut Line     |
| C34" × 44" (86 × 112 cm)  | Cut Line     |
| T70" × 90" (178 × 229 cm) | Tiled Poster |

When creating Banner posters, the length will vary based on the supply size loaded and the number or length of your original documents. Because of this, the "Size" option will be "grayed out" and unavailable.

To determine the final length of a banner, use this formula:

$(\text{Supply Width} \div \text{Original Document Width}) \times \text{Original Document Length} = \text{Banner Length}$

For example, if you start with three letter-size pages (8.5" wide and 11" long per page, for a total of 33" of length) to be printed end-to-end on 23" wide supply paper:

$$(23 \div 8.5) \times 33 = 89.3$$

Your banner will be about 89.3" long, or about seven and a half feet. To save time, this chart shows the approximate final lengths for some common sizes:

### 23" Supply Paper

|                     |                      |
|---------------------|----------------------|
| 2 letter-size pages | About 60", or 5'     |
| 3 letter-size pages | About 90", or 7.5'   |
| 4 letter-size pages | About 120", or 10'   |
| 5 letter-size pages | About 150", or 12.5' |

### 36" Supply Paper

|                     |                      |
|---------------------|----------------------|
| 2 letter-size pages | About 93", or 7.75'  |
| 3 letter-size pages | About 140", or 11.5' |
| 4 letter-size pages | About 186", or 15.5' |
| 5 letter-size pages | About 233", or 19.5' |



## Copies

The Copies option allows you to change the number of poster copies that will be printed at one time, up to a maximum of ten copies. To print multiple copies, follow these steps.

1. Highlight the Copies option on the main menu, using the Up and Down arrows.
2. Change the number of copies with the Left and Right arrows.

After printing a set of posters, the selected number of copies will automatically reset to one. While using Banner mode, you can only print one copy at a time.

## 4.2 Advanced Options

The Advanced options let you adjust Echo's default settings, to customize your printing.

### Setup

This entry in the Advanced menu provides access to the Setup menu, which includes less common options. Most of the options in the Setup menu are used for initial setup or for troubleshooting. They will be discussed in section 4.3, *Setup Options*.

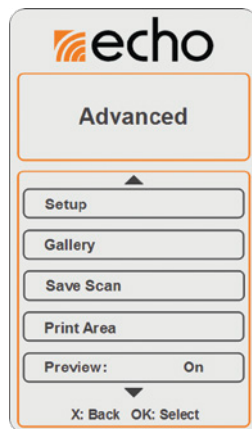
### Preview

With this feature, a preview of the document is displayed on the screen after the original is scanned, and Echo will wait for you to press the OK button or the Print button before printing. By default, Preview is On.

- When scanning multiple sheets, the Preview function will prompt you for approval after each scan, before printing that poster. If you choose to cancel the print, none of the remaining documents in the scanning tray will be scanned or printed until you start a new job.
- When printing a banner, the Preview function is not available.

In order to disable or enable Previews, follow these steps.

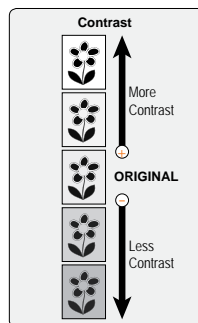
1. Highlight the Advanced option on the main menu and press the OK button.
2. Highlight Preview on the Advanced menu.
3. Use the Left or Right arrows on the Control Panel to toggle Preview Mode off or on.



## Contrast

You can adjust the scanner's contrast control to improve the readability of your document or make your pictures look better. To make Contrast adjustments, follow these steps.

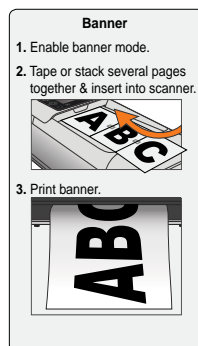
1. Highlight the Advanced option on the main menu and press the OK button.
2. Highlight Contrast on the Advanced menu.
3. Use the Left and Right arrows to decrease or increase the contrast values for your poster print. Contrast settings range from -5 (low contrast) to +5 (high contrast). The default value is 0.



Make sure to check the preview before printing, to determine if the contrast adjustment will provide the intended result.

## Banner

Using this option, you can create long banners instead of normal-sized posters. Stack multiple sheets (up to 15) in the scan input tray, or tape several sheets of paper together into a single long document for scanning. Echo will scan your original documents in sections, printing each section and then scanning the next, until you have a long, finished banner. Note that any blank margins on the original pages may appear as gaps in the final banner. To create a banner, follow these steps.



1. Prepare a sequenced stack of documents you wish to use for a banner, or tape together multiple sheets of paper to create one long original document. Place the originals on the scan input tray.
2. Highlight the Advanced option on the main menu and press the OK button.
3. Highlight Banner on the Advanced menu.
4. Use the Left or Right arrows on the Control Panel to toggle Banner printing off or on.
5. Once you have enabled Banner printing, return to the main menu by pressing the Close ("X") button.
6. Use the Left or Right arrows to select the desired Mode.
7. Feed your original documents into the scanning tray, and press the Print button.

After your banner finishes printing, Echo will return to its normal settings; to print another banner, follow these steps again.

## Auto Cut

With this feature, Echo will automatically cut a poster from the roll of supply paper after the poster is printed. By default, Auto Cut is On. To disable or enable Auto Cut, follow these steps.

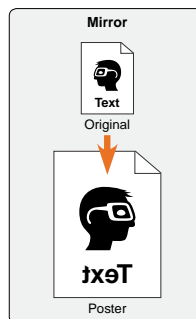
1. Highlight the Advanced option on the main menu and press the OK button.
2. Highlight Auto Cut on the Advanced menu.
3. Use the Left or Right arrows to toggle Auto Cut off or on.

While Auto Cut is turned off, press the Cut (scissors) button on the Control Panel to operate the cutter after your poster is finished. Auto Cut will turn back on after Echo completes its next print job (either one poster or a set of copies of a poster).

## Mirror

You can print a mirror image of your original document with this option, creating a “backwards” poster, as if seen in a mirror. This will make text difficult to read; usually, this option is best for images or photos. To enable or disable Mirror printing, follow these steps.

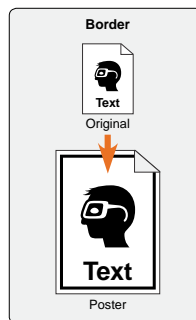
1. Highlight the Advanced option on the main menu and press the OK button.
2. Use the Up or Down arrows to scroll through the Advanced menu, and highlight Mirror.
3. Use the Left or Right arrows to toggle Mirror printing off or on.



## Border

You can select one of several different border styles to add a printed frame to your poster. To add one of these borders to the print, follow these steps.

1. Highlight the Advanced option on the main menu and press the OK button.
2. Use the Up or Down arrows to scroll through the Advanced menu, and highlight Border. Then, press the OK button.
3. Use the arrow buttons to highlight the desired border style, and press the OK button.



When you add a border, it will take up part of your poster's area. If your original document has important content near the edges of the page, it may be obscured by the border. Make sure to check the preview before printing, to determine if the border will print over something that you don't want covered.

## Print Area

You can enlarge and print a specific portion of your original document by selecting a specific Print Area. This option is especially useful when enlarging a small document (like a picture or a business card) using the carrier sheet. This option is not available with Banners. In order to change the Print Area of your poster, follow these steps.

1. Highlight the Advanced option on the main menu and press the OK button.
2. Use the Up or Down arrows to scroll through the Advanced menu, and highlight Print Area. Then, press the OK button.
3. On this screen, you can choose a printing Mode, Size, and number of Copies using the arrow buttons.
4. Place your original document in the scanning tray, and press the Print button.
5. Use the Up and Down arrows to adjust the size of your selection box on the preview, and press the OK button.
6. Use the arrow buttons to move the selection box to the desired part of the preview. Only the portion inside the selection box will be printed. If you need to resize the box again, press the Close ("X") button to go back a step.
7. Press the Print button. Echo will enlarge and print the area inside your selection box.

## Gallery

Echo has two different poster galleries.

- **PreMade** – The PreMade gallery is loaded with pre-designed posters. These are stored internally in Echo's permanent memory.
- **User** – The User gallery stores posters that you have scanned and saved. The poster information is stored on your removable SD Memory Card.

## PreMade Gallery

Posters in the PreMade Gallery can be resized to fit different areas; the size choices available will change based on the size of supply paper currently in your Echo. To print a poster from the PreMade Gallery, follow these steps.

1. Highlight the Advanced option on the main menu, and press the OK button.
2. Use the Up or Down arrows to scroll through the Advanced menu, and highlight Gallery. Then, press the OK button.
3. Use the Up or Down arrows to highlight the PreMade gallery, and press the OK button.

4. While browsing the gallery, you can use the arrow buttons to highlight a folder within the gallery and press the OK button to look in that folder. Press the Close ("X") button to return to the previous area of the gallery. When you see the poster design that you want, highlight it and press the OK button.
5. Use the Up or Down arrows to highlight the Size option, and use the Left or Right arrows to select the poster size that you would like. You can also set a number of copies to print.
6. When the size and number of copies are correct, highlight the Print option and press the OK button to print your poster.

### **User Gallery**

If you are using an SD Memory Card, you can view and print posters that you have previously saved using the Save Scan function. These posters appear in the User Gallery, and are listed in the order in which they were saved. In order to print a poster from your User Gallery, follow these steps.

1. Highlight the Advanced option on the main menu, and press the OK button.
2. Use the Up or Down arrows to scroll through the Advanced menu, and highlight Gallery. Then, press the OK button.
3. Use the Up or Down arrows to highlight the User gallery, and press the OK button.
4. When you see the poster design that you want, highlight it and press the OK button.
5. You can set a number of copies to print. If you want more than one copy, use the Up or Down arrows to highlight the Copies option, and use the Left or Right arrows to choose a number of copies.
6. When you are ready, highlight the Print option and press the OK button to print your poster.

The User Gallery will only show those saved posters that are sized for the supply paper that is currently loaded. To print other saved posters, you will need to load different supply paper; you can also re-scan your original document for the new size.

To remove a scanned poster from the User Gallery, select it from the Gallery as if you were going to print it. Highlight the Delete option and press the OK button. Press the OK button again to confirm your choice. This Delete option is only available in the User gallery; you cannot delete posters from the PreMade gallery.

## Save Scan

Using this function, you can scan an original document and save it for printing at any time. These saved posters will appear in the User Gallery, as described above. To scan an original document and save it to the User Gallery, follow these steps.

1. Highlight the Advanced option on the screen, and press the OK button.
2. Use the Up or Down arrows to scroll through the Advanced menu, and highlight Save Scan. Then, press the OK button.
3. On this screen, you can select a printing Mode and Size with the arrow buttons. Your saved posters cannot be modified after scanning; if you would like to print the poster in another size, you will need to follow these steps again with a different size selected.
4. Place the document in the scanner and press the Print button.

The files created when you save a scan are stored on a replaceable SD Memory Card. If Echo does not detect the SD Memory Card, it will display an error message when you try to save a scan or view the User Gallery.

Echo will give each scanned design a numbered file name. Each file name will end in “\_23” or “\_36”, indicating the size of supply paper needed to print the poster. If you use the same SD card for other purposes, you can identify Echo’s saved poster designs by the file extension “.eff”.

## 4.3 Setup Options

Inside the Advanced menu, there is another menu for Setup. While the other options under Advanced offer special tools to affect posters, the Setup menu allows you to make changes to Echo’s settings that affect the printer itself. Most of these Setup options are used for initial setup or for troubleshooting.

### Darkness

The Darkness option allows you to adjust the amount of heat used by Echo’s print heads during the printing process. You should normally leave this setting alone. Echo will automatically adjust the heat to match the supply paper that is loaded. If you see faint or “faded” printing across your finished posters, then this setting may need to be adjusted. Our support team may direct you to adjust this setting.



## V. Gap

The V. Gap option allows you to adjust the alignment of the print heads, relative to each other. You should normally leave this setting alone. If this option needs adjusting, you may see a “vertical gap” — a blank line, parallel to the feed of the poster. Our support team may direct you to adjust this setting.

## H. Gap

The H. Gap option allows you to adjust the alignment of the paths of the print heads, relative to the feed of supply paper as it moves through the printer. You should normally leave this setting alone. If this option needs adjusting, you may see “horizontal gaps” — blank lines perpendicular to the feed of the poster. Our support team may direct you to adjust this setting.

## Units

This option allows you to display the poster dimensions in either Standard (inch/foot) or Metric (cm/m) units. Poster and roll length measurements will be displayed in the selected units of measure. The default setting is for Standard units. To change the displayed units, follow these steps.

1. Highlight the Advanced option on the main menu, and press the OK button. Then, highlight the Setup option and press the OK button.
2. In this menu, highlight Units.
3. Use the Left or Right arrows to toggle between Standard and Metric units.

## Auto-Off

This option lets you set an idle time, after which Echo will automatically power down. To turn Echo on again, simply press the Power On/Off button.

The idle time settings are Never, 1 hour, 2 hours, 4 hours, 8 hours, and 12 hours. The default setting is "Never", which means Echo will not turn itself off. In order to change this setting, follow these steps.

1. Highlight the Advanced option on the main menu, and press the OK button. Then, highlight the Setup option and press the OK button.
2. In this menu, highlight Auto-Off.
3. Use the Left or Right arrows to select the desired idle time before Echo will shut itself down.

## Language

In order to change the language setting for Echo's menus and options, follow these steps.

1. Highlight the Advanced option on the main menu, and press the OK button. Then, Highlight the Setup option and press the OK button.
2. In this menu, highlight Language.
3. Use the Left and Right arrows to select the desired language, and press the OK button. You will see a message that the language selection will take effect when the system restarts.
4. Use the Power On/Off button on the Control Panel to turn off the system, wait for a few seconds, and turn it on again.

English is currently the only language supported by Echo, but this will be updated in the future.

## Network

This menu allows you to adjust the necessary settings to connect Echo to a network. Often, these network settings are managed by an IT team, so you may need their help to ensure that these settings are correct. If these settings have not been properly adjusted, you may not be able to print from computers on the network.

In order to reach the Network menu, follow these steps.

1. Highlight the Advanced option on the main menu, and press the OK button. Then, Highlight the Setup option and press the OK button.
2. In this menu, highlight Network, and press the OK button.

Now, continue to the following sections as necessary.

## IP Type

Here, you can select the IP Type that is appropriate for a new device on your network. To set this option, reach the Network menu as described above, and then follow these steps.

1. Reach the Network menu as described above.
2. In this menu, highlight IP Type.
3. Use the Left and Right arrows to select the network type. Choose DHCP if Echo should request an IP Address assignment from your network's server, or choose Static if you will assign the IP settings manually.

For most networks, we recommend Static IP assignment. With that setting, you will need to continue to the other options under the Network menu in order to finish the network setup. If you are using DHCP instead, Echo will attempt to find appropriate settings automatically when it is placed in LAN Connected mode.



## Address, Gateway, and Mask

When using Echo with a Static IP assignment, you will need to manually set the IP Address, Gateway, and Mask (or “Subnet Mask”) using Echo’s Control Panel. For these settings, reach the Network menu as described above, and then follow these steps.

1. Highlight the needed option in the Network menu, and press the OK button.
2. Use the Up and Down arrows to adjust the value of the highlighted digit, and use the Left and Right arrows to change which digit is highlighted.
3. Once you have finished entering this setting, press the Close (“X”) button to return to the previous menu.
4. Repeat these steps for the remaining settings.

## MAC Address

The MAC address of a device is unique and permanent, and is sometimes useful for network setup and troubleshooting. To view the MAC address for your Echo, reach the Network menu as described above. Then, highlight MAC, and press the OK button. It may be helpful to write down the MAC address.

## Test Page

A Test Page is a demonstration poster including a variety of printed elements. For most purposes, you should confirm that Echo is working normally by printing a desired poster, rather than the Test Page. For certain print quality issues, the Test Page may be useful as part of a troubleshooting process, and our support team may direct you to try this option.

## Calibrate

This option calibrates Echo’s scanner. You should normally leave this setting alone. For certain scan quality issues, or when updating the system, our support team may direct you to use this option. To calibrate the scanner, you will need a single 8.5" × 11" piece of clean white paper, with no folds or wrinkles.

## Diagnostic

The Diagnostic menu offers additional tuning controls, and is locked to prevent accidental damage to the system. If these tools are needed, a support agent will provide the necessary steps.

## 5. Echo Software

### 5.1 Echo's Driver and Printing Preferences

The software that a computer uses to control a physical device is called the device's driver. Echo has a standard Windows driver (compatible with Windows XP, Vista, 7, and 8, both in 32-bit and 64-bit versions) and a Mac driver (compatible with Mac OS version 10.6 and newer). In order to print from a computer directly to Echo, that computer will need to have the driver installed. To install the driver, insert the CD provided and follow the prompts onscreen; you may need help from your IT team. If there are any questions, please contact our support team at 800.788.5572.

#### Printing Preferences

The driver software includes the settings called Printing Preferences (or Properties). There are several of these options that may need adjusting when you print from a computer.

#### For Windows Systems

The most important option is on the Page Setup tab of Echo's Printing Preferences. You can choose a poster size in the drop-down menu marked Name. The four most common sizes are available for selection, or you can enter a custom poster size with the "USER" option.

If you are using one of the four preset sizes, the Orientation option on the same tab should be set to "Portrait." This option refers to the direction of print, and not the layout orientation. "Portrait" prints your design from top to bottom, while "Landscape" prints your design from left to right.

On the Stock tab there is a drop-down menu for Post-Print Action; this can be set to "Cut" if you want Echo to cut each poster as it is completed, or "None" if you would prefer to cut the poster yourself.

#### For Mac OS Systems

In the Mac driver, the most important option is the Paper Size, which is selected from the drop-down menu normally.

You should also set the "Scale to Fit" option to "Print Entire Image" or "Print Entire Page". This will automatically resize your design to be printed properly on your selected poster size.

Under "Printer Features", there is also an option for "Cut Media". This can be set to "Cut After Page" if you want Echo to cut each poster as it is completed, or "None" if you would prefer to cut the poster yourself.

## 5.2 Echo Canvas

The custom poster design program included with Echo is called Echo Canvas. This program includes its own help documentation; if you have any questions, use the in-program Help menu, or call for support at 800.788.5572.

## 5.3 Software Plug-ins for Echo

Echo's software package also includes plug-ins for Microsoft Word and OpenOffice, two common word processing programs. These plug-ins allow you to design a poster as a normal, letter-size page, and print it as a full-size poster. To use either plug-in, simply install it from the software CD provided, design your poster in your preferred program, and use the new "Print to Echo" button to create a full-sized poster.

You can also print directly from many other programs, such as Adobe Acrobat Reader, by choosing Echo as your printer and adjusting the print settings appropriately. No additional plug-in is needed.

## 6. Echo Poster Catcher

This optional accessory for Echo catches posters as they are printed. This makes it much easier to create batches of posters at once, or to print remotely, when you are not able to catch the posters yourself.

In order to use the poster catcher, Echo should be resting at the edge of a table or counter, so that posters feed out into open space.

### 6.1 Installing the Poster Catcher

The poster catcher is designed to be lightweight, simple, and easy to use. Follow these steps to install it.

1. The poster catcher is shipped in its collapsed state. Simply unroll the black fabric and rotate the two metallic arms away from the fabric. They will rest at 90° angles.
2. Each of the metallic bars of the poster catcher will fit under Echo. They should be inserted just inside the gray rubber markers, as shown. Slide the arms under Echo and check that they are positioned correctly.
3. Each arm of the poster catcher includes a notch that secures its position under Echo. Slide one arm fully into place, lifting that end of Echo slightly, until the notch catches. Repeat the process for the other side.



### 6.2 Using the Poster Catcher

After installing the poster catcher, you can open or close it as needed. Slide the catcher open by sliding the metallic arms forward until the metal Quick Release Pins snap into place. Close the catcher by pulling those pins to the outside and then sliding the metallic arms under Echo.

Always apply pressure at the metallic arm, and not in the center of the catcher, to avoid bending the frame.



## 7. Maintenance and Troubleshooting

### 7.1 Cleaning Your Echo

We recommend cleaning your Echo system periodically, using our cleaning swabs (provided at no charge with any supply order) or using isopropyl alcohol and a soft cloth. Do not use any other cleaners or solvents.

Cleaning should be done periodically, after every few rolls of paper supply. It may be easier to schedule cleaning “once each month” or “once each season”, depending on your use of the system. The cleaning process should take only about five minutes.

To clean the system, start by turning Echo off. Then, follow these steps.

- Open the scanning module by lifting its right edge. (The scanner is hinged on the left side.)
- Use a cleaning swab, or soft cloth and isopropyl alcohol, to wipe down the scanning window and the scanner’s feed rollers.
- Allow these parts to dry for a minute or so. Then, close the scanner module.
- Use the Lid Release Button to open Echo’s lid. Remove any supply paper.
- Use a cleaning swab, or soft cloth and isopropyl alcohol, to wipe down the print heads and the supply rollers.
- Again, allow the parts to dry for a minute or so. Then, load the supply paper again, and close Echo’s lid.

You can now turn the system on, and resume printing.

### 7.2 Troubleshooting

#### **The screen shows an error message: No Paper Loaded.**

Echo is having trouble identifying its supply paper. To resolve this problem, follow these steps.

- Press the Lid Release button and raise Echo’s lid.
- Check that the supply paper is loaded correctly, with the ends of the roll resting in the paper brackets. Paper should feed from the bottom of the roll and forward over the rubber rollers near the front of the printer. (More details can be found in section 2, *Setup Instructions*.)
- Close the lid again and press the Cut (scissors) button to cycle the cutter.
- If the problem persists, please contact Graphic Products’ support at 800.788.5572.

**My original document is not feeding into the scanner at all.**

Your original document may not be fed far enough into Echo's scanning tray. When loading your original documents to be scanned, follow these steps.

1. If you are using a small document like a card instead of a letter-sized page, insert your document into the carrier sheet provided. This will allow it to feed through the scanner properly.
2. Insert your document into the scanning tray, and slide the edge into the opening for the scanner.
3. Continue to insert the document until you feel the page stop. The back edge of the page should align with one of the marks on the tray, to let you know it is in the right place. If you are using the carrier sheet, it will fall between the marks for A4 and Letter sizes.
4. Try your print job again. If the problem persists, please contact Graphic Products' support at 800.788.5572.

**The scanner doesn't feed my original document smoothly, or the scanned image is smudged.**

The scanner window and rollers probably need to be cleaned. To clean these parts properly, follow these steps.

1. Open Echo's scanner module by lifting its right edge. (The scanner is hinged on the left side.)
2. Use one of the cleaning swabs provided with your paper supplies, or a soft cloth and isopropyl alcohol, to wipe the rollers and scanner window. Allow these parts to dry for a minute or so.
3. Close the scanner module by lowering it back into place.

This issue comes up most often when the same original document is scanned many times. Some of the toner or ink can be rubbed away from the document and into the scanner. If you need many copies of a poster, use the "Copies" function in Echo's main menu.

If you are using a carrier sheet, the sheet itself may be dirty or wrinkled. In that case, try using a fresh carrier sheet. Common page sizes (letter and A4) do not need a carrier sheet.

**The cutter is noisily jammed, or an error message appears: Cutter Jammed.**

If the cutter mechanism jams, it may make a loud noise. This does not mean that the cutter is broken, but the jam will need to be cleared before you can continue to use Echo. To clear a jammed cutter, follow these steps.

1. Press the Lid Release button and raise Echo's lid.

2. Remove any paper that is in the path of the cutter or has been partially cut, and roll the supply paper back so that it does not feed out the front of Echo.
3. Close the lid again, and press the Cut (scissors) button to cycle the cutter and ensure that it can move smoothly with no paper in the way.
4. Press the Lid Release button and raise Echo's lid again; pull the supply paper out so that it extends past the edge of the printer, and close the lid again. To cut a clean edge to the paper, press the Cut (scissors) button.
5. Retry your print. If the jam persists, please contact Graphic Products' support at 800.788.5572.

### **I'm trying to print from my computer, but nothing happens.**

After the initial setup is completed, you should be able to print posters from Echo Canvas and other design programs using the common "Print" function and selecting Echo as the printer to be used. If Echo is not responding at all to commands from your computer, there could be several possible causes; to check each possibility, follow these steps.

1. First, make sure that Echo is powered on, and that the connection between Echo and your computer is securely in place. A USB cable should connect Echo directly to your computer, or an Ethernet cable should connect Echo into your network.
2. Next, make sure that Echo is in the correct Connection mode. The screen should display either "Connection: USB" (for a direct connection with a USB cable) or "Connection: LAN" (for a network connection with an Ethernet cable).
3. If you are connecting your computer to Echo through a network, then Echo's network settings may need to be adjusted. Your IT team can provide the necessary network information, and those settings are described in section 2.3, *Optional – Preparing for PC Printing*.
4. If all settings seem to be correct, the problem may simply be a delay in the communication between your computer and Echo. Turn off Echo using the Master Power Switch, wait about ten seconds, and turn Echo back on. Then, restart your computer.
5. Retry your print. If the problem persists, please contact Graphic Products' support at 800.788.5572.

**Everything starts normally, but Echo stops partway through a print job.**

This may be caused by a physical problem. Follow these steps to find the cause.

- 1.** Open Echo's lid and check the supply paper. If the paper has jammed, carefully clear the jam, close the lid, and retry your print job.
- 2.** If the supply paper has run out, remove the old paper core and insert a fresh roll of supply paper.
- 3.** If the supply paper is ready, close Echo's lid again. The print job may resume automatically.
- 4.** If the job does not restart on its own, try printing your poster again. If the problem comes back, please contact Graphic Products' support at 800.788.5572.



## 8. Glossary

**Carrier Sheet** – a sheet of white paper, attached along one edge to a clear plastic film. Small documents can be inserted between the plastic and paper; this allows them to feed through Echo’s scanner properly. Carrier sheets may be reused many times; if a replacement is needed, please contact Graphic Products for help. The carrier sheet included with Echo is “Document Carrier 099DC.”

**Connection Panel** – the set of plugs in the back of Echo. There is a power connection, a USB plug, an Ethernet plug, and with the Master Power Switch.

**Control Panel** – the panel of buttons on the top of Echo. You can use the buttons there to control most of the system’s functions, along with the Control Screen at the center of the panel.

**Control Screen** – the information display at the center of the Control Panel, on top of Echo. This screen shows details on the supply paper that is loaded, the options that are available for you, and previews of the poster that you will be printing.

**Direct Thermal (DT)** – a type of thermal printing, in which heat is used to activate “ink” that is carried inside a special supply paper. Wherever heat is applied, the ink appears. The result is an instant print, without any separate supply of ink. However, if the whole poster is heated (in a laminator, for instance) then all of the ink will be activated, ruining the poster.

**Feed Rollers** – the rubber rollers in the bottom of your Echo, near the opening in the front of the printer. These pull the supply paper through the printer during the printing process.

**Ethernet** – a common type of networking connection. Ethernet cables physically link different devices on a network, allowing computers and other devices to communicate with each other.

**IP Address** – an identification for a device on a network. Much like a mailing address, an IP Address is used to deliver information to the right place. IP Addresses can be assigned in different ways, so your IT team may need to help.

**LAN** – “Local Area Network”, a way to connect multiple computers and other devices together. When the Control Screen shows “Connection: LAN”, it means that the printer is ready to receive commands (such as print jobs) over its network connection.

**Letter-Size** – in the United States, a standard paper size of 8.5" × 11" (about 216mm × 279mm). This guide also uses “letter-size” to refer to documents of roughly similar sizes, including the internationally-used A4 size. Smaller original documents may be used with the included carrier sheet.

**Original Document** – a letter-size page, from which Echo can create a much larger poster. This original document may be a photo or a drawing, not just text, and it may be a copy of another document. Original documents that are black-and-white, or shades of gray, work best.

**Platen** – the flat section inside the printer that provides a working surface. The paper is pressed against the platen as the print heads perform the print.

**Print Heads** – the parts of a printer that apply or activate ink, effectively making the print happen. Echo is a thermal printer, which means that the print heads do their work by heating up and cooling off at different points as they pass over the surface of the supply paper.

**Scanner Module** – the component of Echo that includes the Control Panel and the scanner. This component is hinged on the left; you can lift the scanner module by raising the right side.

**Scanning Tray** – the place for original documents at the top of Echo. When scanning or enlarging documents, place them face up at the right side of the Control Panel. When finished, they will feed out the left side.

**Thermal Transfer (TT)** – a type of thermal printing, in which heat is used to move “ink” from a carrier film onto the printed page. Where heat is applied, the ink sticks to the page. The carrier film is removed and discarded after printing, and the result is an instant, durable print.

**USB** – a common connection standard for devices, such as printers, that plug directly in to a computer. When the Control Screen shows “Connection: USB”, it means that the printer is ready to receive commands (such as print jobs) over a direct connection.

## 9. Certifications

### 9.1 FCC Compliance

This equipment has been tested and found to comply with the limits for a CLASS A digital device, pursuant to Part 15 of the FCC Rules. Operation is subject to the following two conditions: (1) This device may not cause harmful interference, and (2) this device must accept any interference received, including interference that may cause undesired operation. These limits are designed to provide reasonable protection against harmful interference when the equipment is operated in a commercial environment. This equipment generates, uses, and can radiate radio frequency energy, and if not installed and used in accordance with instructions may cause harmful interference to radio communications. Changes and modifications could void the user's authority to operate this equipment.

### 9.2 US, Canadian and European EMC and EMI standards

This equipment has been tested and passed with the requirements relating to electromagnetic compliance based on the standards EN 55022: 2010, EN 55024: 2010, CISPR 22:2008, EN 301 489-01 V1.9.2:2011, EN 301 489-03 V1.6.1:2013, EN 302 291-2 V1.1.1:2005, RSS-Gen:2010, RSS-210:2010, FCC 15.107:2014, FCC 15.109:2014, FCC 15.207:2014, FCC 15.225:2014, ANSI C63.4:2009, IEC 60950-1:2005 (2nd Edition) and/or EN 60950-1:2006. Per RSS-Gen, Section 7.1.3 This device complies with Industry Canada license-exempt RSS standard(s). Operation is subject to the following two conditions: (1) this device may not cause interference, and (2) this device must accept any interference, including interference that may cause undesired operation of the device. This includes Industry Canada (IC) certification number 9684A-GPECH001.

### Normes CEM et EMI américaines, canadiennes et européennes:

Ce matériel a été testé et a répondu à toutes les exigences de conformité électromagnétique fondées sur les normes EN 55022: 2010, EN 55024: 2010, CISPR 22:2008, EN 301 489-01 V1.9.2:2011, EN 301 489-03 V1.6.1:2013, EN 302 291-2 V1.1.1:2005, RSS-Gen:2010, RSS-210:2010, FCC 15.107:2014, FCC 15.109:2014, FCC 15.207:2014, FCC 15.225:2014, ANSI C63.4:2009, IEC 60950-1:2005 (2e édition) et/ou EN 60950-1:2006. Selon RSS-Gen, Section 7.1.3 Le présent appareil est conforme aux CNR d'Industrie Canada applicables aux appareils radio exempts de licence. L'exploitation est autorisée aux deux conditions suivantes: (1) l'appareil ne doit pas produire de brouillage, et (2) l'utilisateur de l'appareil doit accepter tout brouillage radioélectrique subi, même si le brouillage est susceptible d'en compromettre le fonctionnement. Ceci comprend l'homologation d'Industrie Canada (IC) numéro 9684A-GPECH001.

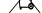
### 9.3 TUV Compliance

The Echo poster printer has passed TUV compliance, which is in accordance with UL standard 60950-1. These testing standards include CUE: CAN/CSA-C22.2 No. 60950-1:2007+A1:2011, UL 60950-1:2007+R:2011-12, EN 60950-1:2006 +A11:2009+A1:2010+A12:2011+A2:2013 and CB IEC 60950-1:2005 (2nd Edition) +A1:2009+A2:2013. The CB report is available upon request.

We recommend the use of the surge suppressor that is provided with Echo. It will help protect Echo from possible damage during nearby lighting storms. It should be installed between the AC wall outlet and the AC input to the device.

### 9.4 Printer Disposal/Recycling



For European Union member states: The following symbol  of a crossed-out wheeled bin indicates that the Echo printer must be disposed of properly and not treated as general waste. Incorrect disposal could have a negative impact on human health and the environment.

For more information on the correct disposal or recycling of this printer, please contact Graphic Products at 800.788.5572.

## Avertissements de sécurité

Passez attentivement en revue les consignes de sécurité suivantes avant d'utiliser Echo :

- Echo est censée être utilisée seulement à l'intérieur. Conservez l'imprimante à l'abri de l'humidité et de toute exposition prolongée à la lumière directe du soleil.
- Echo est faite pour être utilisée à une température ambiante normale de 10-40 °C et à une altitude maximale d'environ 2 000 mètres au-dessus du niveau de la mer.
- Vérifiez la tension de la source d'alimentation avant de raccorder l'imprimante à une prise secteur. Echo doit être utilisée avec des prises électriques standard à courant alternatif de 110-240 V, 50-60 Hz, reliées à la terre. La consommation de courant d'Echo est généralement de 2,2 A.
- N'utilisez que des câbles d'alimentation homologués avec Echo. Si vous avez besoin d'un câble de remplacement, veuillez contacter l'assistance de Graphic Products au 800.788.5572.
- Avant de brancher le cordon d'alimentation dans Echo, veillez à ce que l'interrupteur marche/arrêt soit sur arrêt.
- Ne laissez aucun liquide ou métal entrer en contact avec les pièces internes d'Echo. Pour un nettoyage ordinaire, suivez les consignes incluses dans ce guide.
- Seul du personnel d'entretien qualifié doit essayer d'entretenir l'imprimante.
- L'imprimante doit être mise hors tension avant d'effectuer un type quelconque d'entretien.
- Une petite charge statique peut s'accumuler sur Echo dans les milieux sensibles à l'électricité statique. Ne faites pas fonctionner Echo près de matières inflammables.
- La prise électrique doit être située près de l'imprimante et facilement accessible pour permettre une coupure d'alimentation rapide. Débranchez tout à fait l'imprimante de la prise murale pour couper complètement l'alimentation.
- Mettez Echo hors tension et débranchez-la si :
  - l'imprimante fait un bruit inhabituel;
  - des liquides ou métaux ont pénétré dans le système;
  - il y a un orage ou une panne d'électricité;
  - Echo produit de la fumée ou une odeur inhabituelle.

---

**REMARQUE :** Les changements ou modifications n'ayant pas été expressément approuvés par la partie responsable de la conformité peuvent faire perdre à l'utilisateur l'autorisation de faire fonctionner le matériel.

---

---

**AVERTISSEMENT : Ne placez pas vos doigts près des lames de découpage. Pour débloquer un bourrage papier, mettez d'abord l'imprimante hors tension, puis utilisez un outil, comme un crayon par exemple, pour enlever le papier coincé. Ne faites pas cela avec les doigts.**

---

La lame de découpage est située à l'intérieur de l'unité d'impression. Cette lame est très coupante et peut fonctionner automatiquement après l'impression d'une affiche. Si Echo est mise hors tension alors que la lame est en déplacement, elle peut s'arrêter avant de revenir à sa position de départ à l'extrémité droite. Ne déplacez pas la lame à la main. Mettez plutôt le système sous tension et laissez la lame se déplacer automatiquement. N'essayez pas de charger du papier quand la lame n'est pas à sa position de départ.

Dans des conditions de fonctionnement normales, la lame ne pose pas de risque pour l'utilisateur. Le mécanisme de découpe d'Echo est équipé d'un circuit de surcouple qui est censé mettre hors tension la lame de découpage s'il capte un excès de résistance ; toutefois, la lame peut quand même causer des blessures en cas d'usage contraire aux consignes de sécurité.

Nous conseillons d'utiliser un limiteur de surtension avec Echo. Ceci permettra de protéger Echo en cas de saute de courant (souvent causée par un éclair ou des accidents). Un limiteur de surtension doit être installé entre la prise murale à courant alternatif et le câble d'alimentation d'Echo.

## Contact Us

Graphic Products, Inc. has been a leader in custom labeling, signage, and visual communication solutions for over 40 years. Our commitment to providing world-class service is at the heart of everything we do.

If you have any further questions, or if any problems arise that are not addressed in this User Guide, please let us know. Graphic Products proudly offers free support to all of our customers.

Call us at:

**800.788.5572** (U.S.A. and Canada only)

**1.503.644.5572** (International)

Visit our website at **GraphicProducts.com**

Email us at **info@graphicproducts.com**



**800.788.5572 | [GraphicProducts.com](http://GraphicProducts.com)**

© 2014 Graphic Products, Inc. All Rights Reserved

v. 1.0 - 6/24/15