



DuraLabel
TORO[®]
MAX
INDUSTRIAL LABEL & SIGN PRINT SYSTEM

USER GUIDE

CONTENTS

1. Introduction.....	↪ Page 3
2. Safety Instructions.....	↪ Page 4
3. Getting to Know Your Toro Max.....	↪ Page 5
4. Toro Max Home Screen.....	↪ Page 8
5. Loading Ribbon and Supply.....	↪ Page 11
6. Network Settings	↪ Page 12
7. Battery (Optional)	↪ Page 13
8. Using Toro Max on a PC (Optional)	↪ Page 14
9. Cleaning Toro Max	↪ Page 16
10. Specifications	↪ Page 17
11. Certifications	↪ Page 18
12. Third-Party Software.....	↪ Page 19
13. Warranties	↪ Page 20




**Toro Max
Interactive User Guide**

Use the “Next” and “Previous” buttons to navigate from page to page. If you’d like to return to this page at any time, just hit the “Home” icon at the bottom of each page.



**May not be available on all PDF viewing software*

 A GRAPHIC PRODUCTS BRAND
Graphic Products®, DuraLabel®, PathFinder®, Toro Max®, Bronco Max®, Lobo® and Kodiak Max® are Registered Trademarks of Graphic Products, Inc. © 2024 Graphic Products, Inc.



1

INTRODUCTION

With your DuraLabel Toro Max, producing custom labels and signs is fast and easy. Its powerful software expands your creative capabilities and simplifies safety compliance. This versatile, go-anywhere printer comes with a built-in keyboard and touchscreen for your convenience.

Because your Toro Max is a standalone system, you can take it to a remote site, or place it on a cart and use it anywhere in your facility. An optional battery even provides hours of working time where no outside power is available.

This guide will provide information and instructions on your Toro Max. You can also watch instructional videos right on your system, and you can get help from DuraLabel support team by calling **800-788-5572** or visiting ***DuraLabel.com***.



2

SAFETY INSTRUCTIONS

Please review the following safety instructions before using the printer:

- Keep Toro Max away from extreme humidity (>85%) and prolonged exposure to direct sunlight.
- Use only with power supply model WDS5150240 (included with the system).
- To completely disconnect power from your Toro Max, remove the battery and unplug the power supply from its wall socket.
- Do not pour liquids onto the printer or its parts. For ordinary cleaning, follow the instructions included in this guide.
- Only qualified service personnel should attempt to repair the printer.
- Toro Max supply may build a small static charge during loading or use. Do not operate Toro Max near flammable materials.
- Do not attempt to use a Toro (original) battery in your Toro Max; a battery specifically made for the Toro Max is available as an optional accessory. Please contact your DuraLabel representative for more information.



NOTE: Changes or modifications not expressly approved by the party responsible for compliance could void the user's authority to operate the equipment.

In addition, to prevent damage to Toro Max and to avoid nullifying the printer warranty, please follow these rules:

- Only use authentic Toro Max supplies from DuraLabel in your printer.
- Read all instructions in this user guide completely.

If something seems to be wrong with Toro Max, refer to the Maintenance section of this guide. If the problem is not resolved by following the recommended steps, please contact DuraLabel by calling **800-788-5572** or visiting ***DuraLabel.com***.



3

GETTING TO KNOW YOUR TORO MAX

Toro Max is a thermal transfer printer, meaning that it uses heat to transfer a solid resin, or “ink”, from a printing ribbon onto a label stock. Toro Max uses a ribbon cartridge system to make loading supplies fast and easy, and the system will recognize which supplies are loaded to simplify your printing tasks.

Toro Max is also a complete, standalone printing system, with its own built-in software and controls. Additional software cannot be installed on your Toro Max; only manufacturer-supplied updates can be installed. If you would like to use other software for label design, you can use Toro Max as a desktop label printer by connecting it to your computer directly with a USB cable, or by connecting it to your local network.



OVERVIEW



Printer Status Light
Green for normal operation, Red for errors.

Supply Status Light
Red if supplies low.

Power Button
Turn Toro Max on/off.

Keyboard Release Slider
Slide right to lower keyboard.

Supply Feed Button
Hold button to feed label stock.

Battery Status Light
Red if battery less than 10%
battery is optional accessory

Touchscreen Release Button
Pop touchscreen out and adjust position by gently pulling lower edge.

Touchscreen
9" multi-touch display. Use fingertip or stylus to operate.

Keyboard
Keyboard folds up to protect touchscreen.

FRONT VIEW



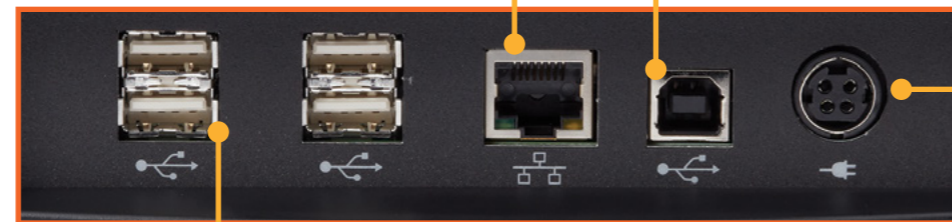
Cutter Opening
Printed labels feed out this slot. *Cutter blade is sharp.*

BACK VIEW



Ethernet Port: Wired network connection

USB-B Port: Connect PC



USB-A Ports (4): Connect devices (e.g. mouse, flash drive)

Power Socket: Connect power supply. AC Adapter uses slider latch to prevent disconnects. Keep flat side up when inserting connector into printer.



IMPORTANT: To unplug connector, grasp power plug release slider, pull away from printer. Do not pull wire.

INSIDE VIEW



WIRELESS MOUSE AND OTHER POINTING DEVICES

In addition to the touchscreen, Toro Max comes with a wireless optical mouse. The mouse uses a small USB receiver (stowed in the battery compartment of the mouse), which plugs into one of the USB-A ports on the Input/Output (I/O) Panel of your Toro Max.

The mouse uses a single AA battery and includes its own power switch. If Toro Max does not respond when you use the mouse, make sure that:

- USB receiver is still firmly connected to your Toro Max,
- Mouse power switch is set to ON, and
- Mouse's single AA battery is still fresh.

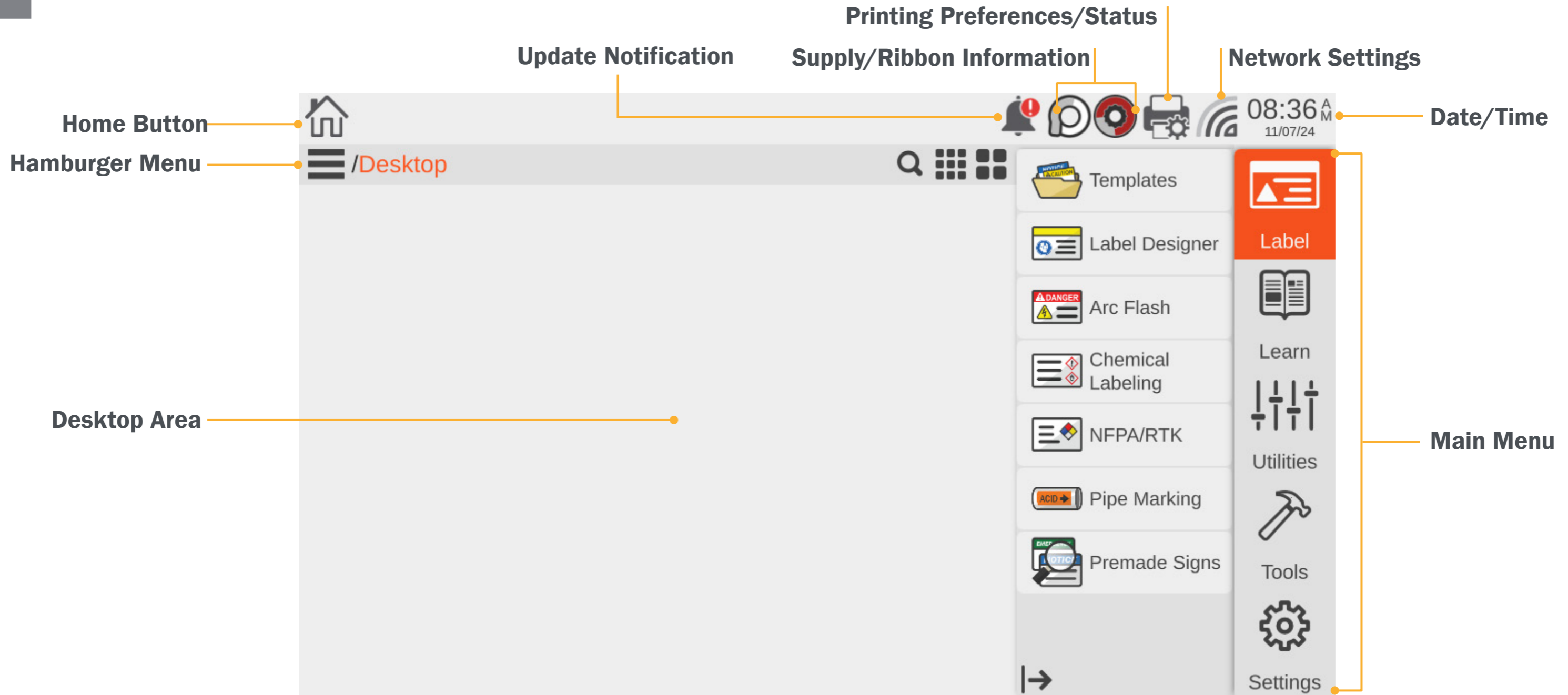
Toro Max also supports most USB-compatible pointing devices, such as ordinary computer mice and trackballs. To install a new pointing device, simply plug it into an available USB-A port on your Toro Max. If it is supported, the system will automatically recognize the new device, and you can begin using it immediately.



4

TORO MAX HOME SCREEN

Toro Max home screen appears when you turn the system on, and you can return to it by clicking the Home button. The main menu on the right of the screen lists the general options that are available: Label, Learn, Utilities, Tools, and Settings.



LABEL


This menu includes options for creating and printing labels. For more information on how to use the label design software on your Toro Max, see the LabelForge PRO User Guide. The same software is also available for installation on a PC.





 **Templates:** Browse existing templates for signs or labels on Toro Max.


 **Label Designer:** Design new signs or labels from scratch, or modify existing designs.

 **Arc Flash:** Enter data for specialized electrical safety signage, and print labels that comply with the NFPA 70E and CSA Z462 standards.

 **Chemical Labeling:** Create GHS-style chemical labels for safety and compliance, using an editable database of chemical details. Labels can follow HazCom 2012 (United States) or international GHS (UN) formats.


 **NFPA/RTK:** Create supplemental chemical labels with the NFPA 704 hazard ratings, using an editable database of chemical details.

 **Pipe Marking:** Quickly design pipe labels to match ANSI/ASME A13.1 or the IIAR Bulletin No. 114 standards.

 **Premade Signs:** Readily access hundreds of predefined labels, categorized by application, which can be used as is or swiftly modified to meet specific needs.


LEARN

This menu includes ways for you to learn about major topics or find the answers to your questions. The options here are:


 **Manuals:** Documentation for your Toro Max and its associated software.


UTILITIES

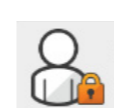
This menu is for maintaining and updating your Toro Max system.


 **Database Manager:** Create, copy, import, or export databases for use with the labeling modules.

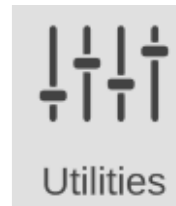
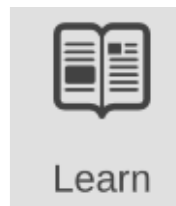
 **Font Installer:** Add a standard .ttf font file to your list of available fonts.

 **Supply Status:** Provides Ribbon and Supply information regarding the supplies currently installed in the printer. As well as providing the current status of the printer.

 **Updater:** View the current software version and easily check for an available update (if your Toro Max is connected to the Internet). Updates can also be installed from a USB storage device.

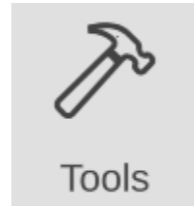
 **Users and Passwords:** By default, Toro Max does not require a login. This utility lets you add designated users, and require a password for accessing the printer's standalone features.

 **Symbol Creator:** Convert common image types (such as .jpg or .tif) to the format used by the Symbols Library in the Label Designer module.



TOOLS

Direct access to specific applications on Toro Max.



Calculator: Perform basic math functions.



Character Map: Browse and copy special characters for use in your labels and signs.



Graphic Viewer: View image files (such as .jpg or .svg) on your Kodiak Max.



PDF Viewer: Read documents in the standard .pdf formats



Spreadsheet Viewer: View and make basic edits to simple spreadsheet files.



Text Editor: Read or write plain text files in the .txt format.



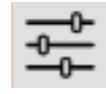
Video Player: Play video files in .ogv format.

SETTINGS

This menu is for your Toro Max system settings.



Settings



General: Allows the user to change the unit of measure (inches or mm), display settings, and privacy settings.



Printer: Modify the printer's default settings affecting how the label or sign is printed.



Date & Time: Adjust the internal clock and calendar. You can also access these settings by clicking on the time or date displayed in the main toolbar, at the top of the screen.



Networking: View or change network settings for a wireless or Ethernet connection. You can also access these settings by clicking the network icon in the main toolbar, at the top of the screen.



Updates: View the software version currently installed on your Toro Max, and check for updates, when connected to the Internet and install updates via Wi-Fi or USB drive.



Languages: Choose to interface in 14 different languages.



Users: Designate users, and require a password prior to using printer.



About: Provides information regarding the system (Serial Number, FCC ID, Version, Available Storage, and more.)



5

LOADING RIBBON AND SUPPLY

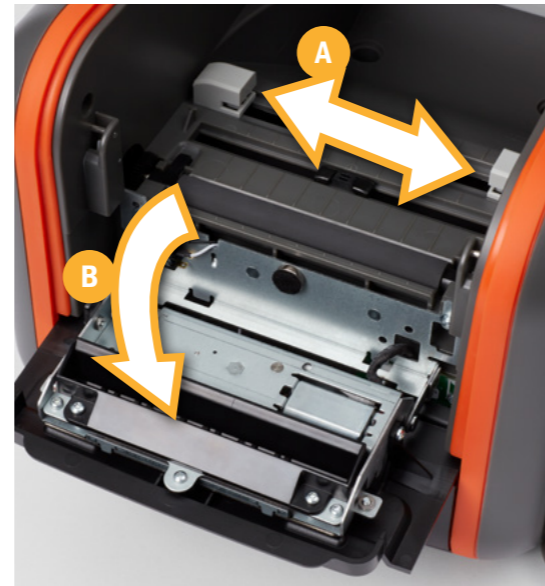
To load your Toro Max with printing ribbon (“ink”) and label stock, you will need to fully raise the hinged cover. Your Toro Max will recognize the supplies you have loaded and automatically adjust its print settings for the best quality. Now you’re ready to design and print custom labels!



1. Lift the cover release latch and **raise the cover** of the printer; the ribbon rails will raise automatically. Make sure the cover and rails are fully raised before continuing.



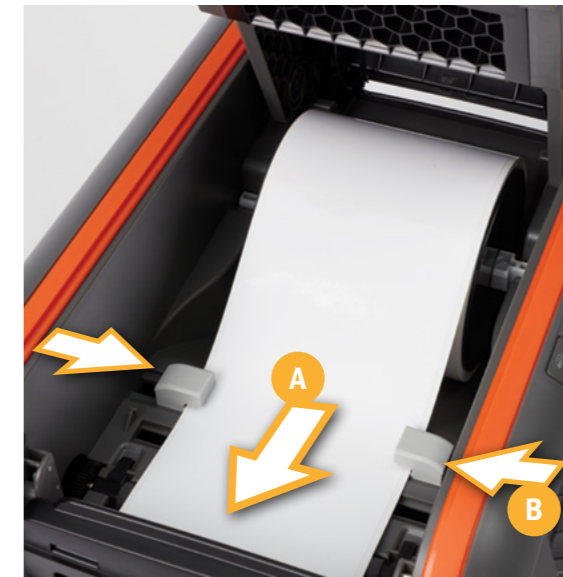
2. **Slide the ribbon cartridge into the slot** in the rails. The cartridge will only fit the correct way, and a magnet will hold it in place. To remove a ribbon cartridge, simply pull it out.



3. **Slide the movable gray guides apart (A)**. For more room, **flip the cutter module down (B)** by pulling the top edge away from the body of the printer.



4. Place the roll of label stock onto the supply spindle*. **Rest the supply in the supply well**, with the spindle fitting into its slots. Feed label stock toward the cutter module, with the printable surface facing upward.



5. **Feed the end of the label stock forward** to reach over the roller (A). **Slide the movable gray guides together** so they hold the label stock neatly centered in the printer (B), without bending or wrinkling the label stock.



6. **Lift the cutter module (A)**, back into its ready position; it will snap into place. Finally, lower the cover until it latches closed (B); the ribbon rails will lower into place automatically. Press firmly on both sides of lid to ensure it's properly closed.

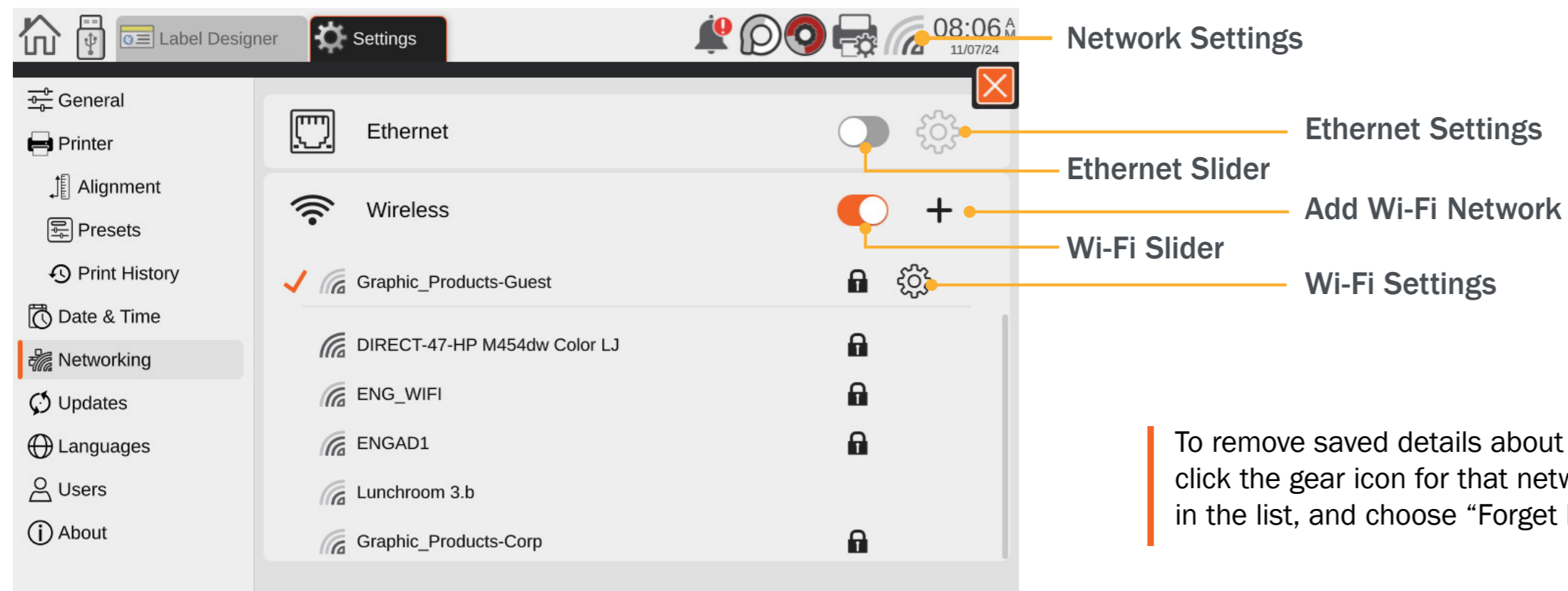
**for narrower supplies, hold the label stock roughly centered on the spindle by sliding a fixing tab onto the spindle from each side.*

6

NETWORK SETTINGS

Toro Max can be connected to a local network, either wired (Ethernet) or wireless. This will allow the printer to communicate over the network, and to receive print jobs from PCs on the network through the PC version of LabelForge PRO. See LabelForge PRO User Guide for additional information. Toro Max's network settings can be easily managed with the on-screen controls. To set up a network connection:

1. Open the **network controls** by clicking on the wireless signal icon in the toolbar, or navigate to the Settings menu from the main screen and choose Networking.
2. To use a **wired Ethernet connection**, simply connect your Toro Max to the network with an Ethernet cable, and make sure the Ethernet option is switched on (with the slider showing orange).
3. To use a **wireless connection**, make sure the Wireless option is switched on (with the slider showing orange). A list of available wireless networks will appear. If your Toro Max is already connected to a wireless network, there will be a checkmark next to the entry for that network.
4. Select your preferred wireless network. If the network is protected by a password, you will be prompted to enter it; then, **click "Connect."**



To remove saved details about a network, click the gear icon for that network's entry in the list, and choose "Forget Network."



RADIUS WIFI

Radius WiFi networks are more secure than standard networks and requires a unique set of credentials for access. Please follow the steps outlined below to connect the print system to a RADIUS WiFi.

1. On the print system, select **Settings** from the home screen
2. Choose **Networking** from the list of options on the left side of the screen
3. Click the **+ icon** located to the right of the pill switch for Wireless.
4. In the "Add a Wireless Network" pop-up menu, enter the name and password for the desired network, and **press Add**. Your system will now be connected to the network.

7

BATTERY (OPTIONAL)

Toro Max's battery is an optional accessory. The Lithium-Ion (Li-ion) battery lets you design and print labels on the go, even without an AC power supply. Typically, a fully-charged battery will allow for up to 3 hours of use in the field.



BATTERY LOADING

The battery mounts into the back of the Toro Max. Remove the battery cover door by pushing the slider downward and pulling the door away.



Position the battery so the cut-outs are aligned and the contacts are in position with the contact interface.



Push the battery in until it locks into place, and return the battery cover door to its position.



CHARGING THE BATTERY

The Toro Max battery charges automatically while it is loaded into the printer and the system is plugged in with its AC Adapter. Charging will continue whether the system is powered on or off, and will stop automatically when the battery is fully charged. No separate charger is needed, and the battery does not need to be removed from the system. The battery can usually be fully recharged in about three hours.

BATTERY MAINTENANCE

Because Lithium batteries self-discharge over time, it is recommended that you fully recharge the battery at least once every three months. When the battery is not in use, keep it in a cool, dry place, away from heat or direct sunlight. Do not disassemble your Toro Max battery. Do not let the metal battery pins come into contact with another metal surface. If you notice any unusual odor, leakage, or swelling in the Toro Max battery, discontinue use and contact your DuraLabel representative.

OLDER BATTERIES

If you have a battery for the original DuraLabel Toro system, do not use it in the Toro Max, as the older battery was designed to use a separate charging system. Contact your DuraLabel representative for more information.

8

USING TORO MAX FROM A PC (OPTIONAL)

In addition to its standalone capabilities, Toro Max can receive print jobs from a PC. Your printer comes with a PC version of the LabelForge PRO label design software, as well as a Windows printer driver.

CONNECTING THE PRINTER VIA USB

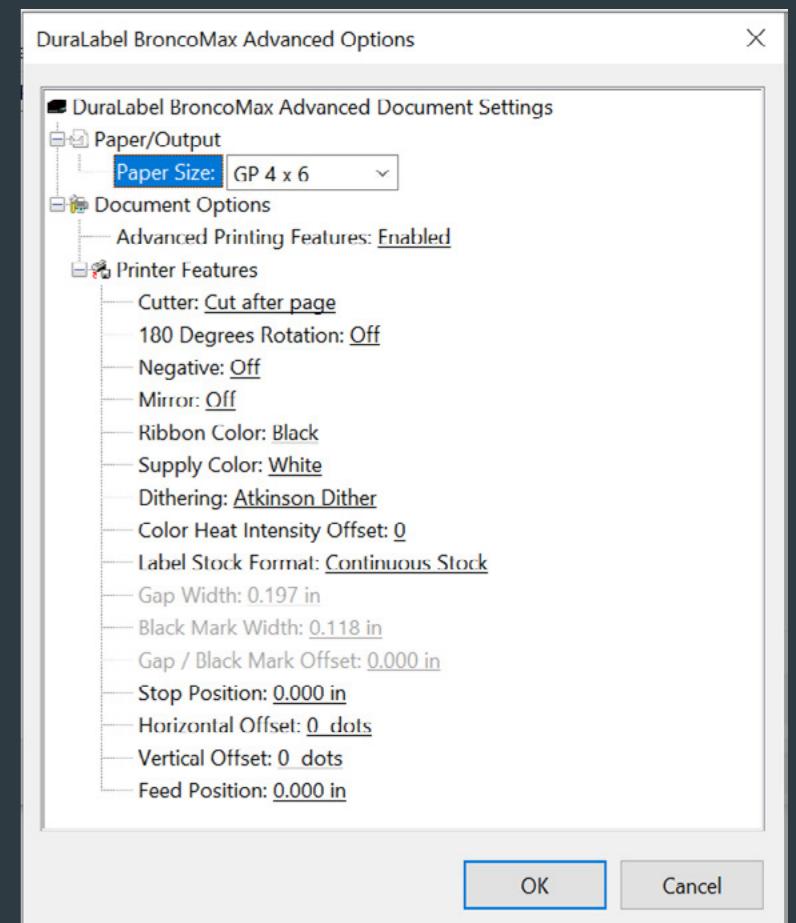
When connecting your Toro Max to a PC for the first time, follow these steps:

1. Make sure **Toro Max has power**, either from a battery or from its corded power supply, and power it on by pressing the power button.
2. Next, **connect a USB cable** from the Toro Max's USB-B port to a USB-A port on your PC.
3. **Run the Toro Max driver installation program**, contained on the USB flash drive included with the printer. IT administrator privileges will be required. After installing, be sure to restart the PC.
4. **Run the LabelForge PRO installation program**, also included on the USB flash drive. You may need IT administrator privileges to continue.

When accessing the Printing Preferences from a PC, the orientation setting (landscape/portrait) will be the only option immediately available. Additional options for unusual needs, or for troubleshooting, can be reached by clicking the “Advanced...” button:

- **Cutter:** cut after each label printed, after a complete job, or not at all
- **Speed:** choose print speed (default 2" per second)
- **180 Degrees Rotation:** choose to rotate all print jobs by 180 degrees for troubleshooting.
- **Negative:** invert colors of the design, from “printed” (ribbon color) to “not-printed” (label stock color).
- **Mirror:** flip design backward, as if viewed in a mirror.
- **Ribbon Color and Supply Color:** manually select different material colors for software previews; the actual printed results will not be changed.
- **Dithering:** choose how Toro Max uses patterns of dots to approximate shades of darkness.
- **Heat Intensity Offsets:** adjust the heat used in the printing process.
- **Label Stock Format:** manually select the type of label stock: continuous stock, stock with gaps, notched stock (die-cut supply), or stock with marks (black-mark supply).

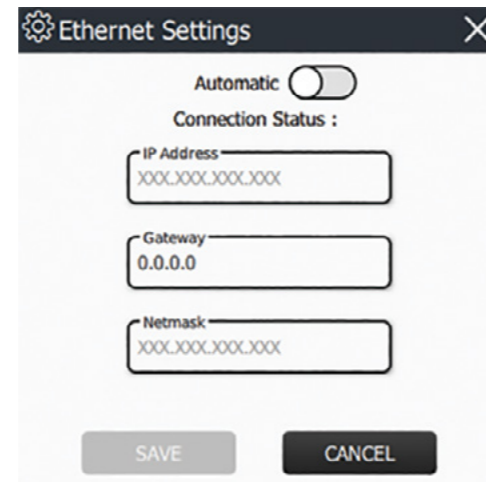
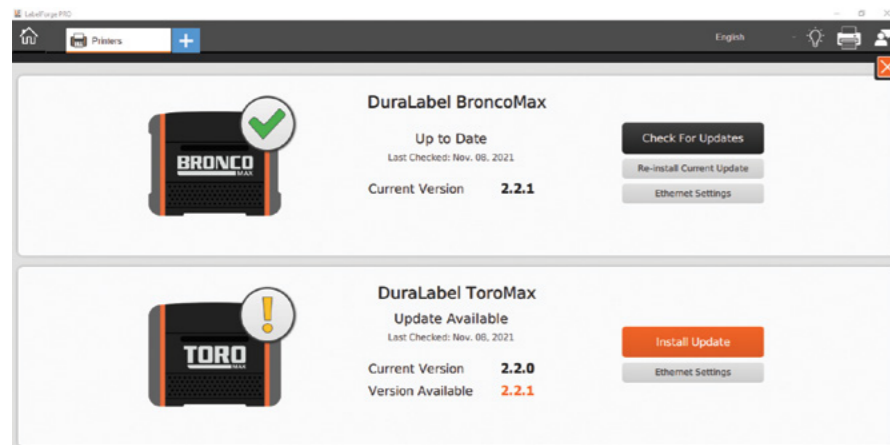
The remaining options are for advanced troubleshooting needs, and should be left at default values.



MANAGING NETWORK SETTINGS FROM A PC

You can also control your Toro Max's network settings from a PC. This will require a standard USB connection from the PC to Toro Max, and the PC will need both the printer driver and the LabelForge PRO label design software installed.

1. **Connect your Toro Max to a PC,** using a standard USB cable.
2. If using a wired (Ethernet) connection for Toro Max, make that connection now, leaving the USB connection in place.
3. **Open LabelForge PRO on the PC,** and select "Printers" from the main screen.
4. Under details of your Toro Max listed, **click "Ethernet Settings"**
5. For DHCP, leave the slider switch set to Automatic. For static network controls, enter the appropriate network parameters.
6. **Click "Save"** and wait a few seconds for the process to complete. **Document the IP address shown.**
7. **Close the Ethernet Settings window and LabelForge PRO,** then disconnect the USB cable from the printer.



At this point, the printer is connected to the network and its network settings are saved internally.

DIRECTING A PC TO FIND THE NETWORKED PRINTER

A network-connected Toro Max may not be discovered by Windows automatically. These steps will manually add the networked printer to a PC's list of available printers.

Before continuing, you will need to install the Toro Max driver and the LabelForge PRO design software on the PC, from the USB flash drive included with your printer. You will need IT administrator privileges for installation.

1. From the Start menu, **open "Printers & Scanners"** (or "Devices and Printers").
2. **Click "Add a printer or scanner"** (or "Add a Printer").
3. **Click "The printer that I want isn't listed."**
4. **Select 'Choose a shared printer by name,'** then enter the printer name as follows, replacing 'ADDRESS' with the assigned IP address:
`http://ADDRESS:631/printers/ToroMax`
Click "Next."

5. **Select the existing driver software** for the printer, by choosing "Graphic Products, Inc." as the manufacturer, and then choosing "DuraLabel ToroMax." Then, click "Next."
6. **Choose "Use the driver that is currently installed (recommended)."** Then, click "Next," and click "Finish" to complete setup.

You may need to repeat these steps for any PC that will use the printer over the network.

PC DRIVER SETTINGS

After initial setup, your Toro Max will appear in the list of available printers on your computer. Be sure to select the appropriate printer when you want to print labels or other documents.

You can choose some of the settings for your Toro Max through **Printing Preferences.**



If you need help, please contact your DuraLabel representative for support - 1-800-788-5578



9

CLEANING TORO MAX

Periodic cleaning of the print head, cutter blade, label guides, and platen roller will extend the life of the printer and help maintain optimal printing quality.

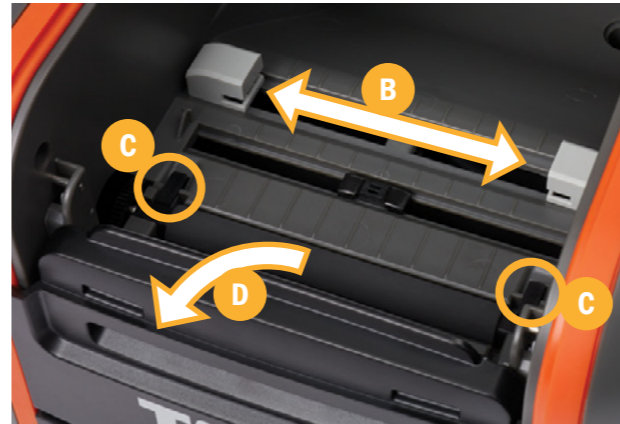


IMPORTANT! Always turn power off and disconnect Toro Max from all power sources (including battery) before cleaning or performing maintenance. Wait 5 seconds after cleaning before turning on.

1. Press cover release latch and raise the cover.
2. Remove ribbon cartridge and label stock (if loaded), and place on a clean, flat surface.
3. Gently rub a cleaning swab or soft cloth with isopropyl alcohol back and forth across the front and underside of the print head to remove any built-up adhesive or residue (A).
4. Run the swab or cloth between and around gray adjustable label guides to clear any dust or adhesive build-up (B).



5. Lift two black latches on either side of the platen roller (C), and lift out (D)*. Use the swab or cloth with isopropyl alcohol to gently wipe away any material that has stuck to the roller surface. Insert the platen roller back into printer, then press firmly down on the two black latches until they lock/snap into place.



6. Finally, to clean the cutter blade, gently insert the swab or cloth into the slot of the cutter module and wipe side to side (E). Repeat this process for front and back of the blade (F). Cutter module can be flipped forward to make the back easier to reach.



*Notched end of supply spindle can be used to release latches.

ADVANCED CUTTER CLEANING

If the cutter blade still carries adhesive build-up, you can temporarily separate the metal cutter assembly from its plastic faceplate for a more in-depth cleaning.



Be careful when performing this advanced cleaning, as the cutter blades are sharp.

With the cutter module flipped forward, remove the three Phillips-head screws: one at the top of the slot (A), and one on each side of the module (B).



1. Carefully remove the plastic faceplate from the metal cutter assembly.
2. Use a cleaning swab or soft cloth with isopropyl alcohol to remove built-up adhesive or residue from both sides of the blade.
3. Reconnect the metal cutter assembly and its plastic faceplate with the three screws.

10

SPECIFICATIONS

PRINT MECHANISM

- Type: Thermal Transfer
- Print Speed: up to 3" per second
- Resolution: 300 dots per inch
- Max. Print Width: 4.0"
- Max. Print Length: 120"
- Cutter: Automatic

INDICATORS & BUTTONS

- **Indicators:** Power, Printer Status, Supply Status, Battery Status
- **Buttons:** Power, Supply Feed, Keyboard Release, Screen Release, Battery Release
- **Touchscreen:** capacitive, 9" (diagonal)

COMMUNICATION & DATA STORAGE

- **Communications:** USB 2.0 (4x USB-A, 1x USB-B), Ethernet
- **Data Storage:** 4GB Flash (long-term), 2GB SDRAM (short-term)

POWER REQUIREMENTS

- Power to Printer (from AC Adapter): 24 VDC, 6.25A
- Power to AC Adapter: 100-240 VAC, 50-60 Hz, 2.8A (max)

CAPABILITIES

- Create, edit, save, and print label designs with internal software
- Lock system with user passwords

OPERATING ENVIRONMENT

- Operating Temperature: 41°F – 104°F (5°C – 40°C)
- Operation Humidity: 30% – 85%, non-condensing
- Storage Temperature: -4°F – 122°F (-20°C – 50°C)
- Storage Humidity: 10% – 90%, non-condensing

LABEL STOCK

- Types: Continuous, Black Mark, and Die-Cut
- Width: 0.20" minimum, 4" maximum
- Gap/Mark Height: 0.12"
- Capacity: varies by supply; external feed available

RIBBON SUPPLY

- Width: 4.17 inch (106 mm)
- Capacity: 360' with 0.5" core diameter
- Type: Wax/resin, resin

PRINTER BODY

- Dimensions: 13.5"W x 10.25"D x 8.5"H
- 12.5 lbs (5.67 kg), excluding supplies/battery

Toro Max specifications are subject to change without notice.

11

CERTIFICATIONS

FCC

This equipment has been tested and found to comply with the limits for a CLASS A digital device, pursuant to Part 15 of the FCC Rules. Operation is subject to the following two conditions: (1) This device may not cause harmful interference, and (2) this device must accept any interference received, including interference that may cause undesired operation. These limits are designed to provide reasonable protection against harmful interference when the equipment is operated in a commercial environment. This equipment generates, uses, and can radiate radio frequency energy, and if not installed and used in accordance with instructions may cause harmful interference to radio communications.

Pursuant to Part 15.21 of the FCC Rules, any changes or modifications to this equipment not expressly approved by Graphic Products Company may cause harmful interference and void your authority to operate this equipment. To satisfy RF exposure requirements, keep all persons at least 20 cm away from the device during operation. (FCC KDB 784748, Section A.8.)

CE

Graphic Products Inc. hereby declares that this device is compliant with Radio Equipment Directive (RED) 2014/53/EU. A copy of the CE Declaration of Conformity, including device frequency bands and maximum radio frequency power, is available upon request. To obtain a copy please call or email; (800) 788-5572 or info@duralabel.com.

ROHS

This product complies with EU Directive 2011/65/EU of 8 June 2011 as amended by EU Directive 2015/863 of 31 March 2015 and including amendments to the exemptions in Annex II.

ICES-003 CLASS A NOTICE

This Class A digital apparatus complies with Canadian ICES-003. This device complies with ISED Canada license-exempt RSS standard(s). Operation is subject to the following two conditions: (1) this device may not cause interference, and (2) this device must accept any interference, including interference that may cause undesired operation of the device.

Cet appareil numérique de la classe A est conforme à la norme NMB-003 du Canada. Le présent appareil est conforme aux CNR d'ISDE Canada applicables aux appareils radio exempts de licence. L'exploitation est autorisée aux deux conditions suivantes: (1) l'appareil ne doit pas produire de brouillage, et (2) l'appareil doit accepter tout brouillage radioélectrique subi, même si le brouillage est susceptible d'en compromettre le fonctionnement.

WEEE

The symbol (right) means that your product and/or its battery shall be disposed of separately from household waste, according to the WEEE Directive (2012/19/EU) and national legislation. When this product reaches its end of life, take it to a collection point designated by local authorities. Separating and recycling the product and/or the battery at time of disposal, will help to conserve natural resources and ensure that the equipment is recycled in a manner that protects human health and the environment.

IFETEL*

La operación de este equipo está sujeta a las siguientes dos condiciones: (1) es posible que este equipo o dispositivo no cause interferencia perjudicial y (2) este equipo o dispositivo debe aceptar cualquier interferencia, incluyendo la que pueda causar su operación no deseada.

**This item may or may not be certified for these compliance marks. Graphic Products' equipment is certified on a case-by-case basis. For more information, please contact your account manager or email info@graphicproducts.com.*

12

THIRD-PARTY SOFTWARE

This is a comprehensive list of third-party software and libraries used by Toro Max, organized by their license type. The licenses can be found in the Licenses file in Toro Max's Manuals folder. While the provided software can be updated through the built-in Update utility or through software provided by Graphic Products, no additional user software can be installed on Toro Max.

GNU GENERAL PUBLIC LICENSE VERSION 2 (GPL-2)

- obexftp: <https://sourceforge.net/projects/openobex/files/obexftp>
- openobex: <https://sourceforge.net/projects/openobex/files/openobex>
- obexpushd: <https://launchpad.net/ubuntu/+source/obexpushd>
- obexd: <https://www.kernel.org/pub/linux/bluetooth>
- rtl8188eu: <https://github.com/lwfinger/rtl8188eu>
- mtd-utils: <http://git.infradead.org/mtd-utils.git>
- mysql odbc: <https://dev.mysql.com/downloads/connector/odbc>
- psqldb: <https://ftp.postgresql.org/pub/odbc/versions/src>
- poppler: <http://poppler.freedesktop.org>
- cups-filters: <http://openprinting.org/download/cups-filters>
- potrace: <http://potrace.sourceforge.net/#license>
- u-boot: <https://github.com/u-boot/u-boot>

GNU GENERAL PUBLIC LICENSE VERSION 3 (GPL-3)

- zint: <http://sourceforge.net/projects/zint>
- samba: <https://www.samba.org/samba/download>
- <https://github.com/KDE/libqapt/blob/master/COPYING>

GNU LESSER GENERAL PUBLIC LICENSE VERSION 2.1 (LGPL-2.1)

- unixODBC: <http://www.unixodbc.org>
- qt-gstreamer: <https://gstreamer.freedesktop.org/src/>
- libqxt: <https://github.com/mnutt/libqxt>
- CuteLogger: <https://github.com/dept2/CuteLogger>
- qjson: <https://github.com/flavio/qjson/blob/master/COPYING.lib>

GNU LIBRARY GENERAL PUBLIC LICENSE VERSION 2 (LGPL-2)

- freetds: <https://github.com/FreeTDS/freetds>

GNU FREE DOCUMENTATION LICENSE VERSION 1.3 (FDL-1.3)

- Qt Spreadsheet Example:
- <http://doc.qt.io/qt-5/qtwidgets-itemviews-spreadsheetexample.html>

BSD 3.0

- wpa_supplicant: https://w1.fi/cgiit/hostap/plain/wpa_supplicant/README

MIT LICENSE

- QtXlsx: <http://qtxlsx.debao.me>
- ijs: <http://www.openprinting.org/download/ijc/download>
- lcms: <https://sourceforge.net/projects/lcms/files/lcms>
- seedrandom.js: <https://github.com/davidbau/seedrandom>

CUSTOM LICENSES

- libsqlite3odbc: <http://www.ch-werner.de/sqliteodbc>
- openjpeg: <https://github.com/uclouvain/openjpeg>
- zlib(GPCompression): <https://github.com/madler/zlib>

13

WARRANTIES

5-YEAR DURALABEL PRINTER WARRANTY

DuraLabel printers are warranted to be free from defects in materials and workmanship for a period of five (5) years from the date of purchase. Within this period, Graphic Products, Inc. will, at its sole option, repair or replace any components which fail in normal use. Such repairs or replacement will be made at no charge to the purchaser for parts or labor, provided that the purchaser shall be responsible for any transportation cost. This warranty does not cover loss, damages from accident, or equipment or parts which have been misused, altered, neglected, carelessly handled, used for purpose other than those for which the printer was manufactured, or damages resulting from unauthorized service.



REPAIRS

Repairs are warranted for 90 days. If the original warranty is still in effect, repaired units will remain under their original warranty or for 90 days from the date of service, whichever is longer.

BATTERIES

The optional battery packs for the DuraLabel Toro Max, Toro (original), and Lobo portable systems are warranted for three years from the date of purchase.

WARRANTY DETAILS

The warranties and remedies contained herein are exclusive and in lieu of all other warranties whether express, implied, or statutory, including any liability arising under any warranty of merchantability or fitness for a particular purpose, statutory or otherwise. This warranty gives the purchaser specific legal rights, which may vary from state to state.

In no event shall Graphic Products be liable for any incidental, special, indirect, or consequential damages, whether resulting from the use, misuse, or inability to use the product for any reason including defect. Some states do not allow the exclusion of incidental or consequential damages, so the above limitation may not apply in all areas.

Graphic Products retains the exclusive right within all warranty periods to repair, replace, or offer a full refund of the purchase price at its sole discretion. Such remedy shall be the purchaser's sole and exclusive remedy for any breach of warranty.

General maintenance and cleaning of the DuraLabel printer is the purchaser's responsibility and is not covered by the warranty. Expendable items or parts such as label supply and ribbon are not covered by this warranty.



NOTE: *Specific preparation may be required before shipping. Please contact your DuraLabel representative to ensure correct return procedure: please call 800-788-5572 for details. Graphic Products, Inc. shall not be responsible for any loss or damages incurred during shipping.*





COPYRIGHT INFORMATION

No part of this manual, including the products and software described in it, may be reproduced, transmitted, transcribed, stored in a retrieval system, or translated into any language in any form or by any means, except documentation kept by the purchaser for backup purposes, without the express written permission of Graphic Products, Inc.

Products and corporate names appearing in this manual may or may not be registered trademarks or copyrights of their respective companies, and are used only for identification or explanation and to the owners' benefit, without intent to infringe.

Specifications and information contained in this manual are furnished for informational use only, and are subject to change at any time without notice, and should not be construed as a commitment by Graphic Products. Graphic Products assumes no responsibility or liability for any errors or inaccuracies that may appear in this manual.