



DuraLabel KODIAK MAX

QUICK START MANUAL



Thank you for choosing DuraLabel® Kodiak® Max Industrial Sign & Label System. You're ready to produce custom labels and signs quickly and easily. This manual shows you how to set up your new Kodiak Max, load supplies, and start printing.

HASSLE-FREE REMOTE SETUP

Connect with a live technical support representative to get help setting up your new printer. Reach out to set up an appointment.

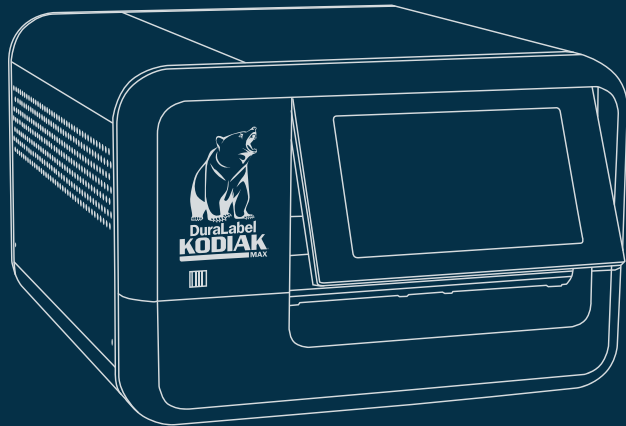
DuraLabel.com/support/remote-printer-setup

REGISTER YOUR PRINTER

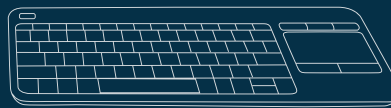
Get access to free support, software updates, and special offers.

DuraLabel.com/register

UNBOXING Verify all items are present.



KODIAK MAX PRINTER



WIRELESS KEYBOARD



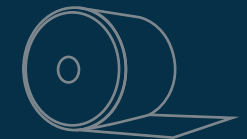
BLANK RIBBON CARTRIDGE*



POWER CORD



STYLUS



LABEL STOCK



LABEL SCRAPER



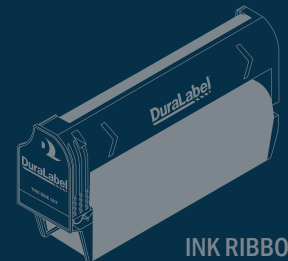
USB DRIVE



CLEANING SWABS



USB CABLE



INK RIBBON

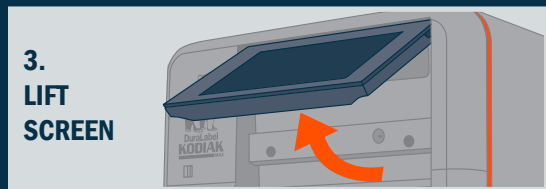
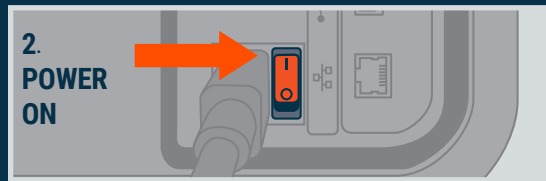
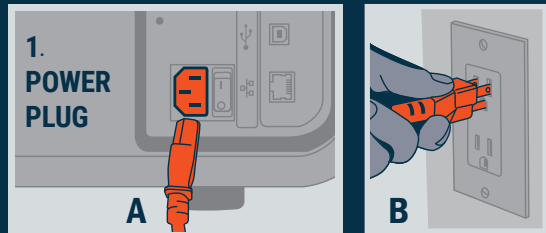
Items sold separately

*DO NOT remove white film; used for single color printing

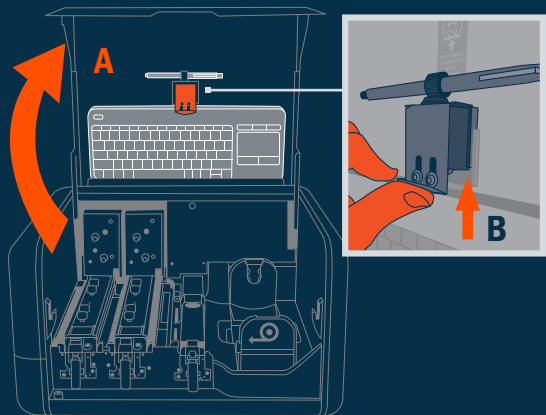
Graphic Products®, DuraLabel®, LabelForge®, and Kodiak® are Registered Trademarks of Graphic Products, Inc. © 2026 Graphic Products, Inc.

877-534-5157 | DuraLabel.com

SETUP



4. INTERIOR & KEYBOARD ACCESS



Scan for User Manuals

DuraLabel
KODIAK
MAX
INDUSTRIAL SIGN & LABEL SYSTEM

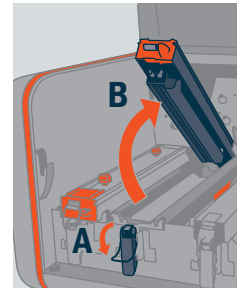
877-534-5157 | DuraLabel.com

SUPPLY LOADING

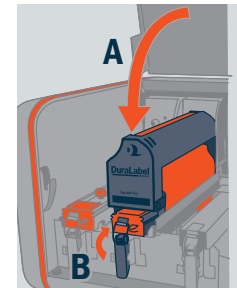
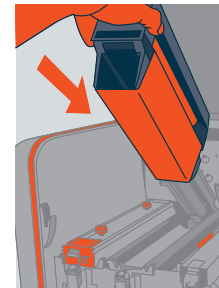
RIBBON CARTRIDGE



1. Unbox ribbon cartridge



2. Release latch & raise rail

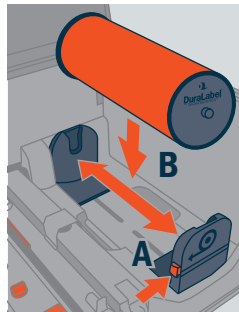


4. Lower & re-latch

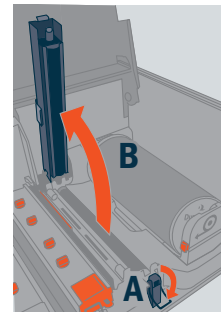
Repeat steps to add a second color to rail #2.

Use blank cartridge for single-color printing.

LABEL STOCK



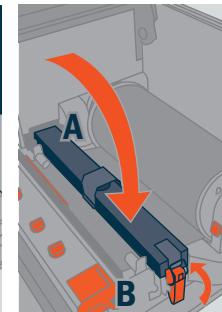
1. Adjust rack & place roll



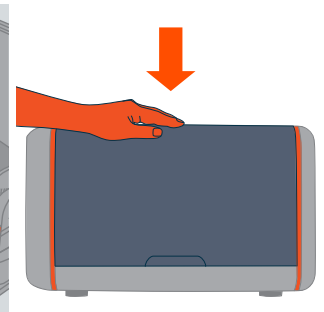
2. Unlatch & raise bar



3. Feed label under roller



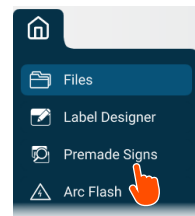
4. Lower bar and re-latch



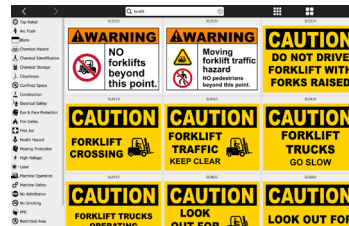
5. Close lid securely; ready!

CREATE & PRINT LABELS WITH LABELFORGE PRO

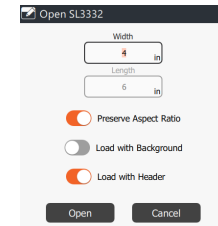
PRINT FROM PREMADE SIGNS



1. Open Premade Signs



2. Search for and click on a sign

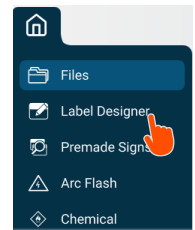


3. Select size & open

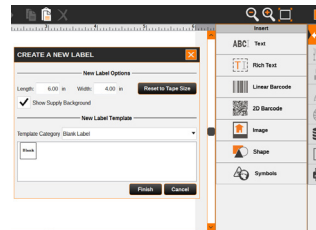


4. Select the printer icon & click print

CREATE LABEL & PRINT



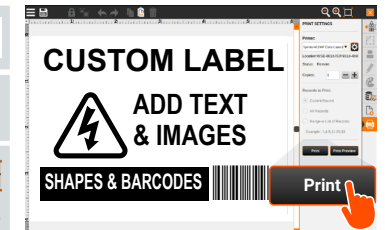
1. Open Label Designer



2. Select label size



3. Customize your label



4. Click print