



# DuraLabel BRONCO® MAX

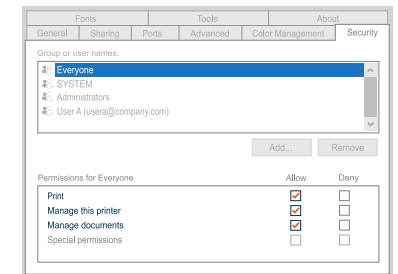
QUICK START MANUAL

Thank you for choosing DuraLabel® Bronco® Max Industrial Sign & Label System. Producing custom labels and signs is fast and easy. This manual shows you how to set up your new Bronco Max, load supplies, and start printing.

### IMPORTANT ADJUST PC SECURITY

Update Printer Security Settings (Windows 10 & 11)

1. Open *Settings*
2. Select *Bluetooth & devices* → *Printers & scanners*
3. Select your DuraLabel Bronco Max printer
4. Click *Printer Properties* → *Security* tab
5. Ensure **Allow** is checked for: *Print*, *Manage this printer*, & *Manage documents*



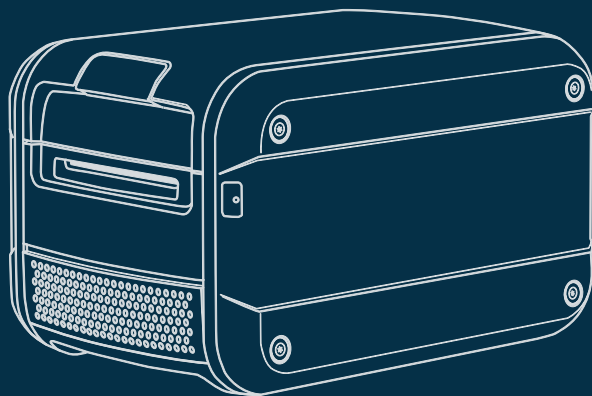
\*may need to restart PC/printer

Hassle-Free Remote Setup - [DuraLabel.com/support/remote-printer-setup](https://DuraLabel.com/support/remote-printer-setup)

Register Your Printer - [DuraLabel.com/register](https://DuraLabel.com/register)

## UNBOXING

Verify all items are present.



BRONCO MAX PRINTER



LABEL SCRAPER



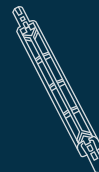
USB CABLE



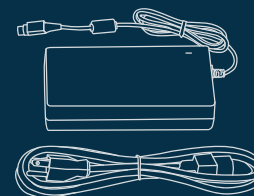
CLEANING SWABS



USB DRIVE



SUPPLY SPINDLE

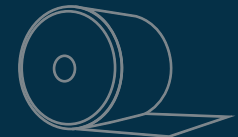


POWER CORD



FIXED TABS

Items sold separately

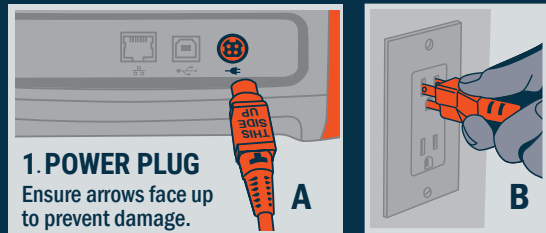


LABEL STOCK

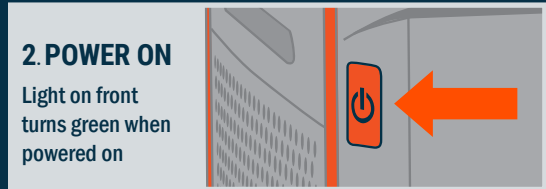


INK RIBBON

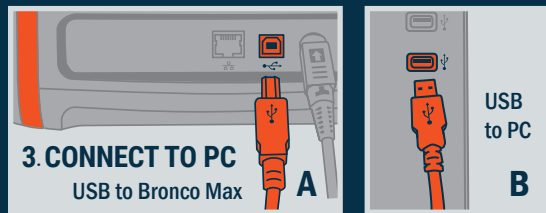
# SETUP



**1. POWER PLUG**  
Ensure arrows face up to prevent damage.



**2. POWER ON**  
Light on front turns green when powered on



**3. CONNECT TO PC**  
USB to Bronco Max

USB to PC

# SOFTWARE INSTALLATION



1. Insert USB drive to PC, open USB drive folder.
2. Run Printer Driver Setup to install required driver.
3. Launch LabelForge PRO installer.
4. Complete on-screen set-up to install.  
*(See security settings on reverse side)*
5. Open LabelForge PRO to finalize setup.



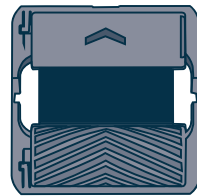
Scan for User Manuals



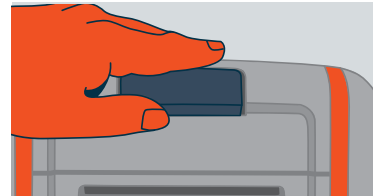
877-534-5157 | DuraLabel.com

# SUPPLY LOADING

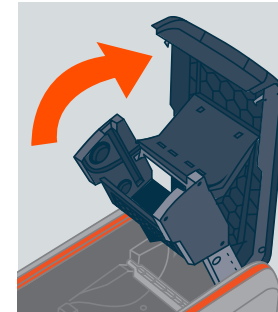
## RIBBON CARTRIDGE



1. Grab cartridge



2. Lift cover release latch

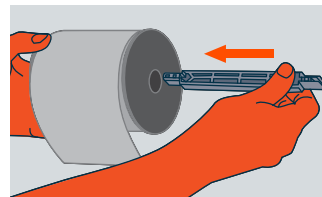


3. Raise cover

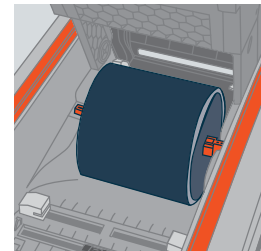


4. Slide ribbon cartridge in

## LABEL STOCK



1. Place label stock roll on spindle



2. Insert roll in place



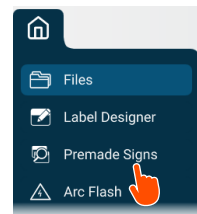
3. Adjust guides, feed label



4. Close lid until it latches; ready!

# CREATE & PRINT LABELS IN LABELFORGE PRO

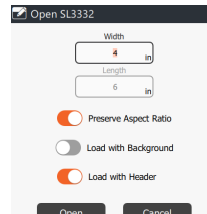
## PRINT FROM PREMADE SIGNS



1. Open Premade Signs



2. Search for and click on a sign

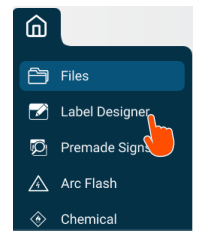


3. Select size & open

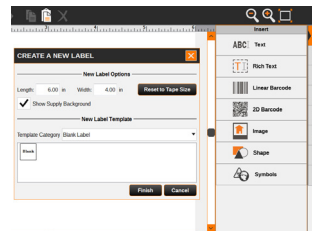


4. Select the printer icon & click print

## CREATE CUSTOM LABEL & PRINT



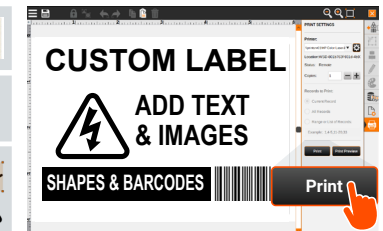
1. Open Label Designer



2. Select label size



3. Customize your label



4. Click print