

This resource was created by



Printing Arc Flash Hazard Labels In EasyPower



ARC FLASH HAZARD

6.0 cal/cm² Arc Flash Incident Energy

4' - 0" Arc Flash Boundary

1' - 6" Working Distance

SHOCK HAZARD

480 V System Voltage

3' - 6" Limited Approach Boundary

1' - 0" Restricted Approach Boundary

MAIN SWITCHBOARD

January 01, 2021

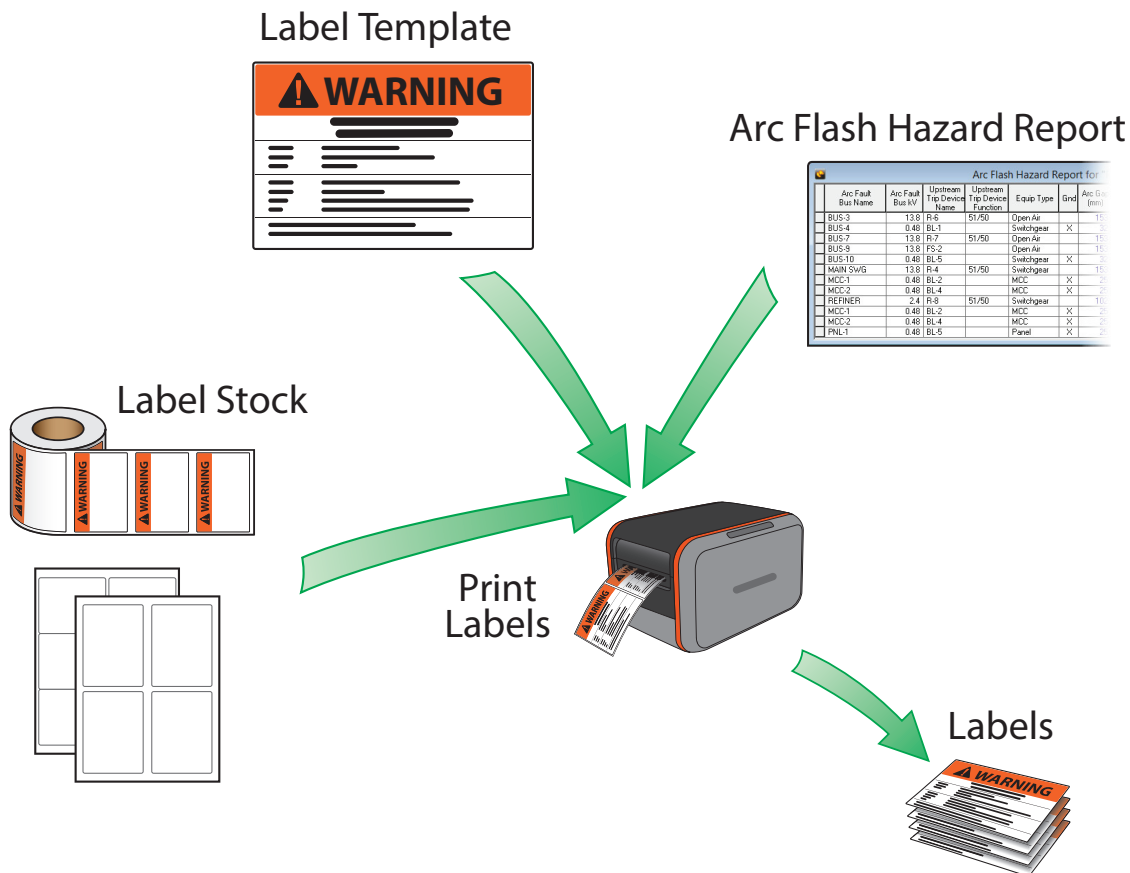
This resource is brought to you by



Getting Started Printing Arc Flash Labels

Printing arc flash labels begins with performing arc flash hazard analysis in EasyPower's Short Circuit focus, through which arc flash hazards are analyzed and reported on the Arc Flash Hazard Report. The interactive interface of the Arc Flash Hazard Report is the platform from which Arc Flash Labels can be printed in EasyPower.

Label printing involves many different variables as illustrated here.



- **Arc Flash Hazard Report** – analysis results flow from this report into the printed labels.
- **Label Template** – the template controls how labels are printed. Several templates are provided with EasyPower to address different scenarios.
- **Label Stock** – blank or partially pre-printed labels come from label manufacturers such as Avery, Brady and DuraLabel. Some label stock comes die-cut in rolls for a thermal printer, while some comes in sheets intended for use in a label printer. Several pre-measured page layouts are available when printing labels which match common label stock.

EasyPower's label designer also enables the customization of a label template to meet your specific needs.

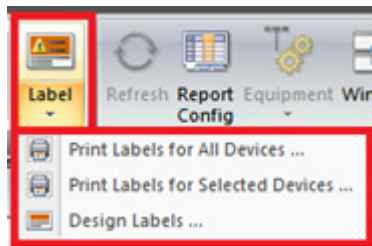
Why Use EasyPower Label Printing and Design?

EasyPower's arc flash label printing functionality pulls data directly from arc flash analysis ensuring you can be confident that information printed on labels comes from industry standard calculations built into EasyPower. The label design tool allows you to customize the printed labels including layout, fields, text, fonts, colors, and images. This gives you full control on how labels appear, to ensure your labeling requirements are met.

How to Print Arc Flash Labels

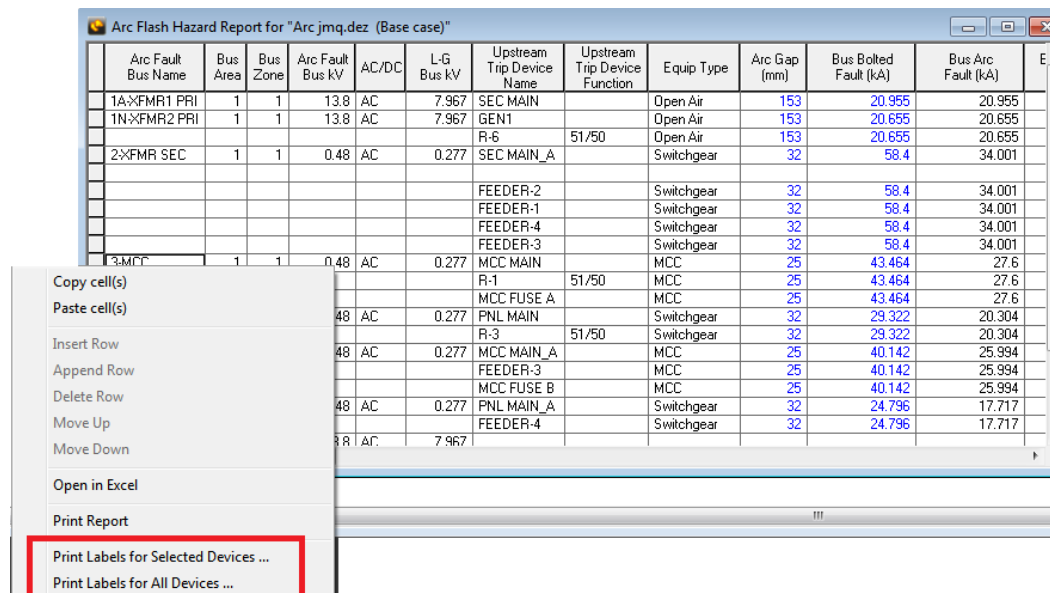
From the Arc Flash Hazard report, you can preview and print the labels from two different paths.

1. Using the toolbar button:



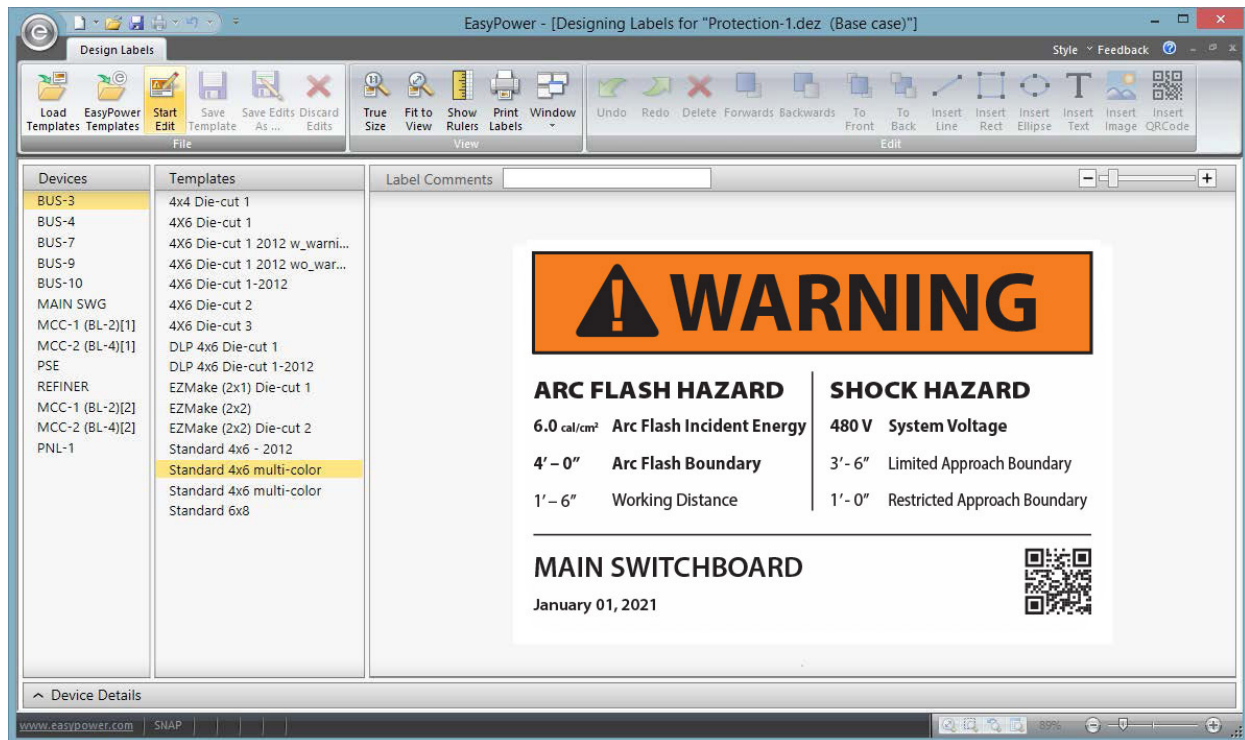
- Clicking on the **Label** button will display the label preview window with all of the devices in the Arc Flash Hazard Report.
- Clicking on the down arrow of the **Label** button provides different options of what to print, including printing only the selected labels. Only the label rows which are highlighted in the Arc Flash Hazard Report will print if this option is chosen.

2. Using the Arc Flash Hazard Report context menu:

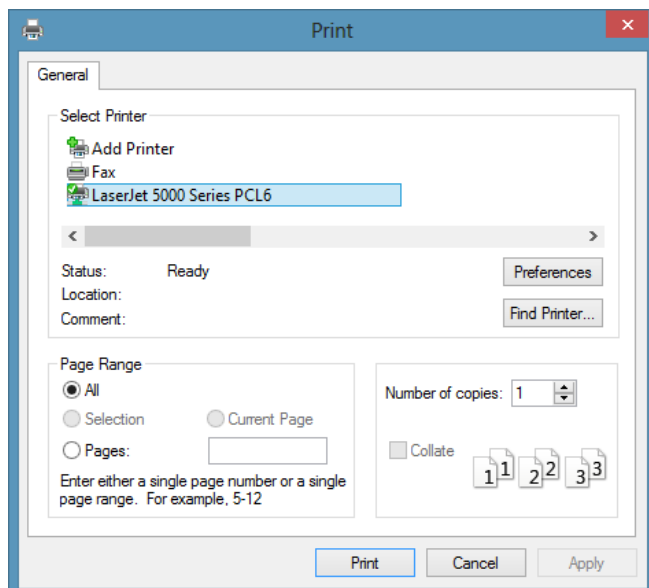


To display the context menu, right-click on the hazard report. From the context menu, you can choose to print labels for all devices or only for the selected device.

After choosing to print labels, the label Print Preview window is displayed. From this window you may choose which label template you want to use when printing your labels, and choose a page layout which matches your label stock. Each label template is slightly different and includes fields from the Arc Flash Hazard Report.

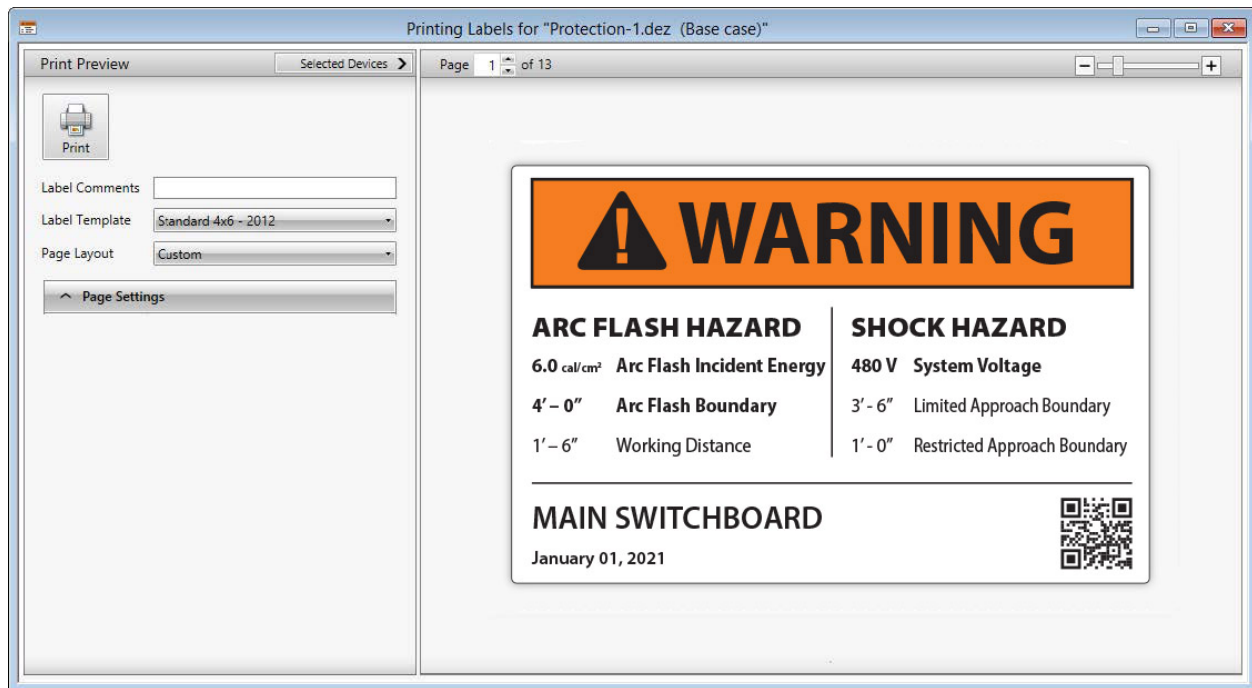


Pressing the **Print** button will allow you select the printer and send your label run to the printer.



Label Print Preview Window

The label print preview window is designed to help you quickly and easily print labels based on the devices in the Arc Flash Hazard Report.



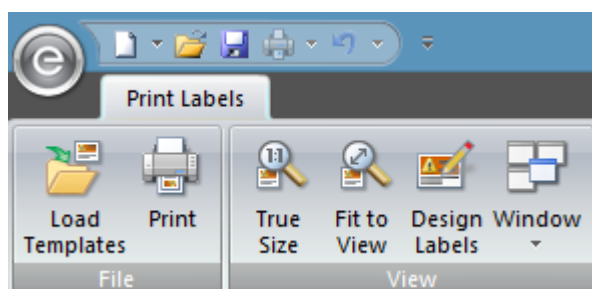
Label Print Preview Window Reference

Option	Description
Print button	Prints the label(s).
Label Comments	Comment to use on each label.
Label Template	Selects template to use from the current label template folder. The folder can be changed by pressing the Load Templates button on the toolbar, or by changing the setting in File Locations .
Page Layout	Selects how to layout labels on printed page. Use this field to choose from several predetermined page layouts from different label manufacturers, or choose custom to match printer and label stock that is not included in the list. Some label print stock comes on one label per page, while others come with multiple labels on the same page.
Selected Devices	Shows the list of devices that will be printed. Any devices with check marks will be printed; otherwise, nothing prints. You can use "All" or "None" or select individually. You can also override the number of copies of labels to print for each device.

Option	Description
Page	Indicates the page number of the labels that will be printed and allows you to select which page you are previewing. Depending on the devices selected and how many of the devices templates can fit into a page or label, the number of pages can dynamically shrink or expand accordingly.
Page Settings	<p>Page settings give you control over the layout of your label stock to ensure that you can reliably print your labels on your printer. See the section “How to Print Custom Label Stock” for more details on items below.</p> <ul style="list-style-type: none"> • Page Size: Allows you to change the width and height to match the actual page or spool size you will use to print the labels. • Label Size: The actual size of each label on the page. The label may be inset from the edge of the page by some margin. • Page Layout: If your label stock includes more than one label per page, use this field to specify the number of rows and columns of labels on each page. • Scale to Fit: If the template you chose does not match the size of the label indicated in page settings, this box can be checked to scale the label template to fit the actual label size. • Center Label: By default, printing starts based on measurements from the top left corner of the label. Check this box to center the printed output within the label. • Label Outline: Check this box to display guides of where the labels are on the page based on the specifications above. • Units: Units used for page layout measurements above. • Labels to Print: When label stock includes multiple labels on the same page, these checkboxes can be used to control how the first page prints. This allows for reusing a sheet of label stock if only some of the labels were used in the last print run.

Print Labels Toolbar

When this window is active, the **Print Labels** toolbar is displayed.



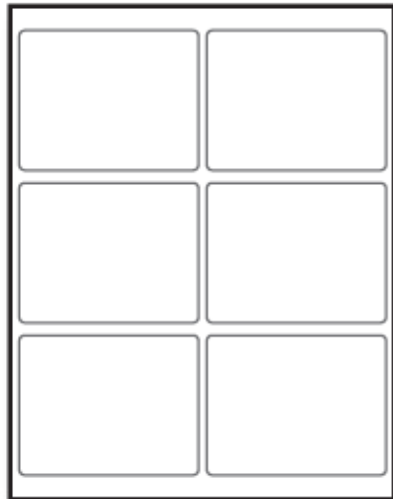
Action Buttons On the Print Labels Toolbar

Action	Function
Load Templates	Loads pre-existing templates from your hard drive or network drive. You can use this button to load templates from pre-existing versions of 9.0 or later.
Print	Prints the label(s).
True Size	Changes print preview to represent the actual size that will be printed.
Fit to View	Changes drawing to best fit the real estate of the drawing panel.
Design Labels	If the current label template needs to be modified before printing, you can access the label designer through this button. The print preview window will be closed.
Window	Use this button to activate a different window within EasyPower, such as the Arc Flash Hazard Report window.

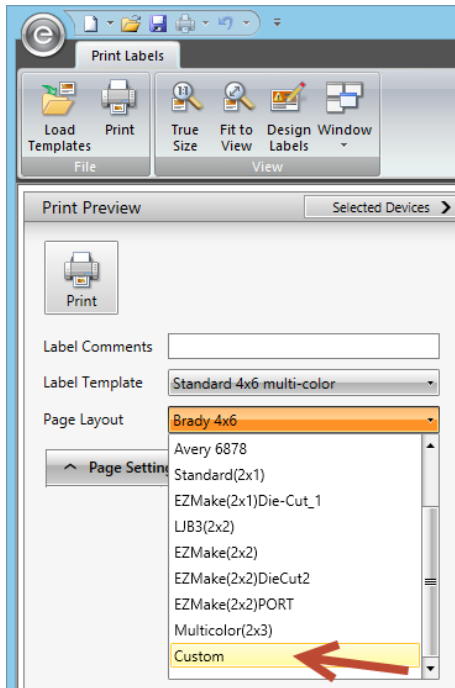
How to Print to Custom Label Stock

EasyPower ships with several pre-configured page layouts which match common label stock, but you may use a label stock which is not already built-in. In this case, you need to specify a custom page layout to match your label stock and this tutorial guides you through that process.

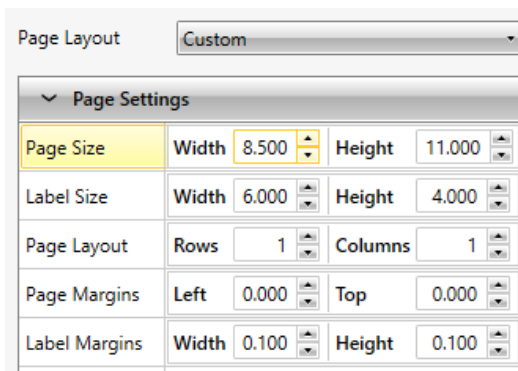
In this example, we will look to configure a page layout using an 8.5 x 11 inch page containing six 4 x 3 inch labels. Below is a picture of the layout of labels on the label stock that we will match with our page layout controls.



1. From the label print preview window, select the **Custom** option from the **Page Layout** drop down list.

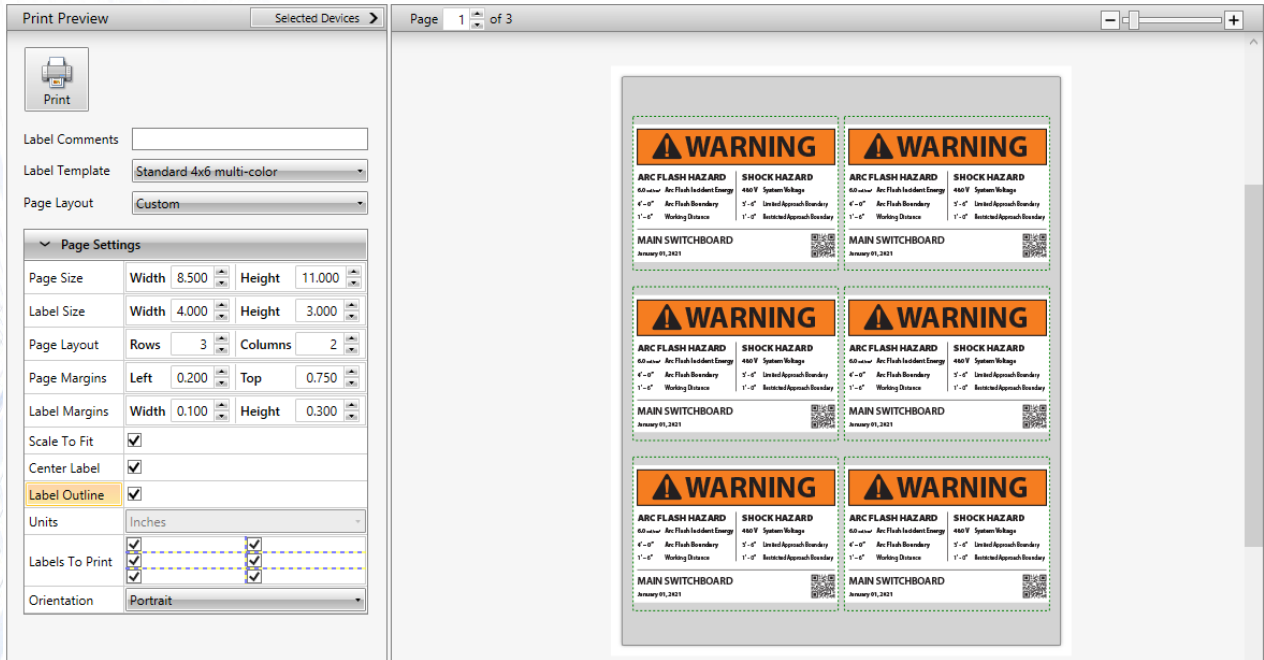


2. Click on the **Page Settings** button to expand the **Page Settings** pane.



3. Specify the size of each page of labels in the **Page Size** fields. In this case, we are configuring a page which is 8.5 inches wide and 11 inches high.
4. Specify the size of the label itself. In this case, we will specify 4 inches wide by 3 inches high.
5. Specify the number of rows and columns of labels. In this case we have 2 columns and 3 rows.
6. The page margins, or margins from the outside edge of the page to the edge of the label, are .2 inches on the left and .75 inches from the top.
7. The label margins, or spacing between labels, is a width of .1 inches and a height of .3 inches.

8. Set **Center Label** and **Scale To Fit** to determine how you want the selected template to fit within the printed label.
9. To check how the template will be printed within your label area, select the **Label Outline** check box. This will add a green dashed line onto the preview illustrating where the labels are on the page. This outline will not actually be printed. The preview should look similar to the following:



EasyPower remembers your custom page layout and uses it the next time you print.

Download Free Demo

www.EasyPower.com/demo

Visit www.EasyPower.com
to learn more.

Follow EasyPower



EasyPower

15862 SW 72nd Ave, Suite 100
Portland, OR 97224
Tel: 503-655-5059
Email: sales@easypower.com

